



# Columbia Wetlands Waterbird Survey

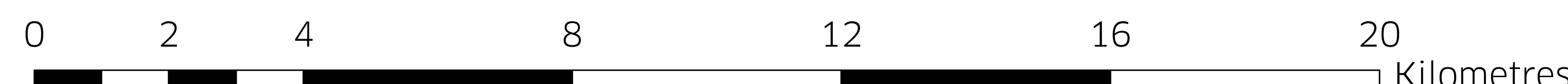
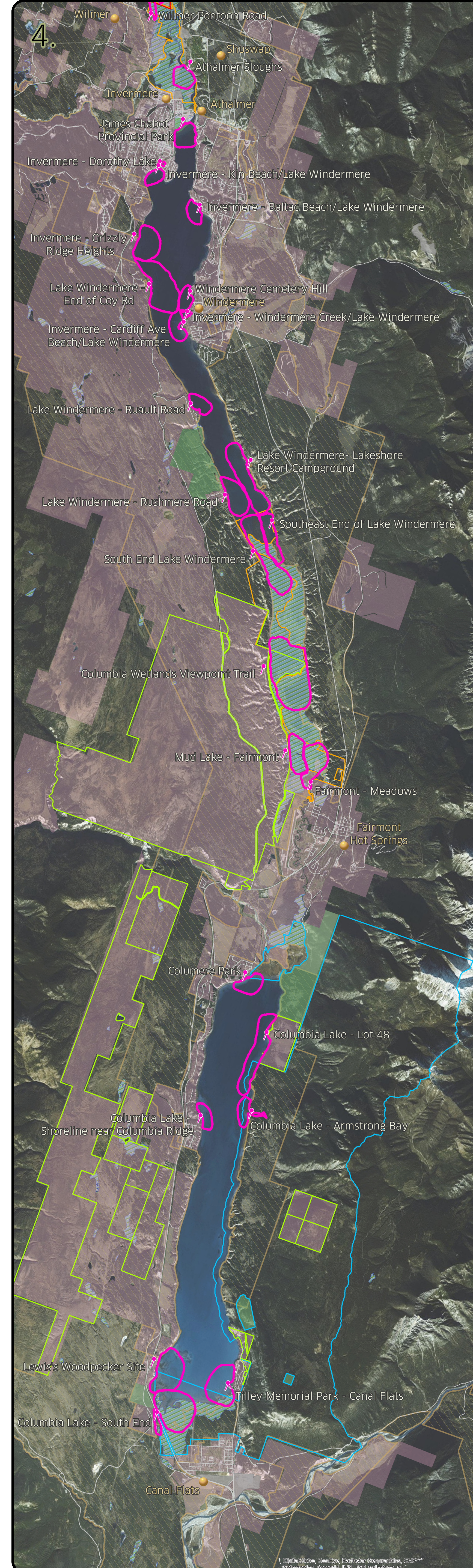
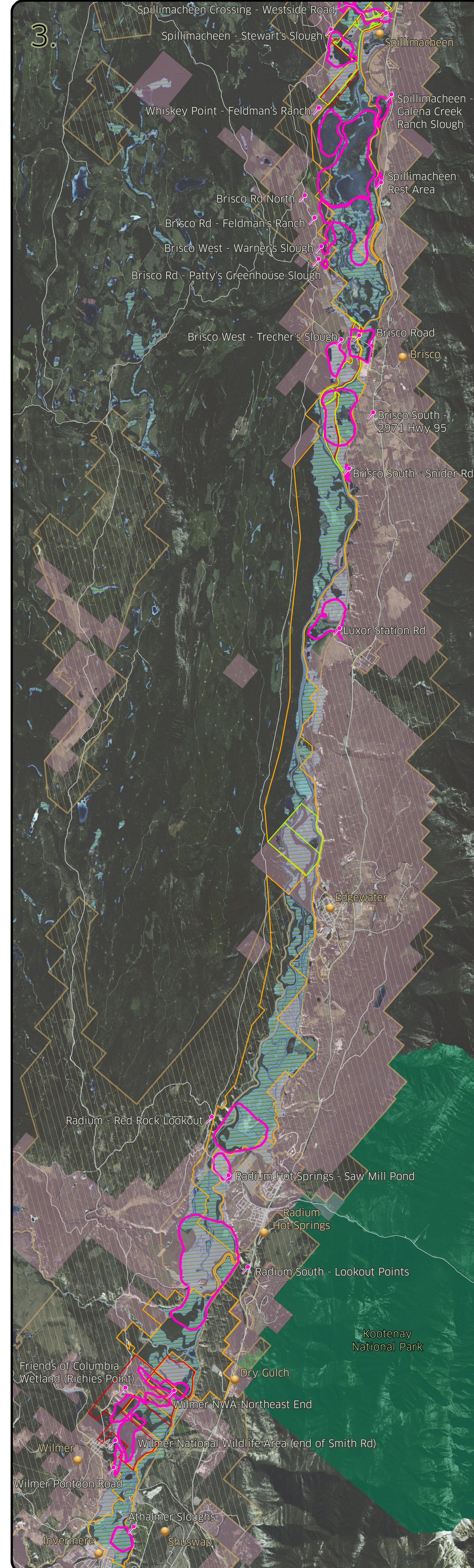
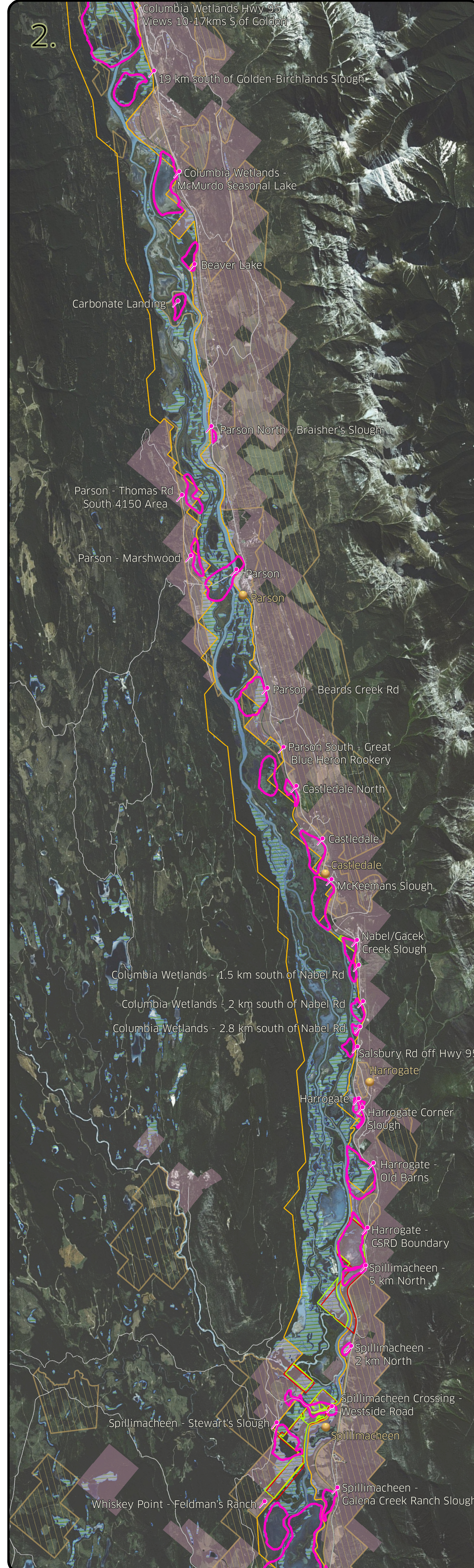
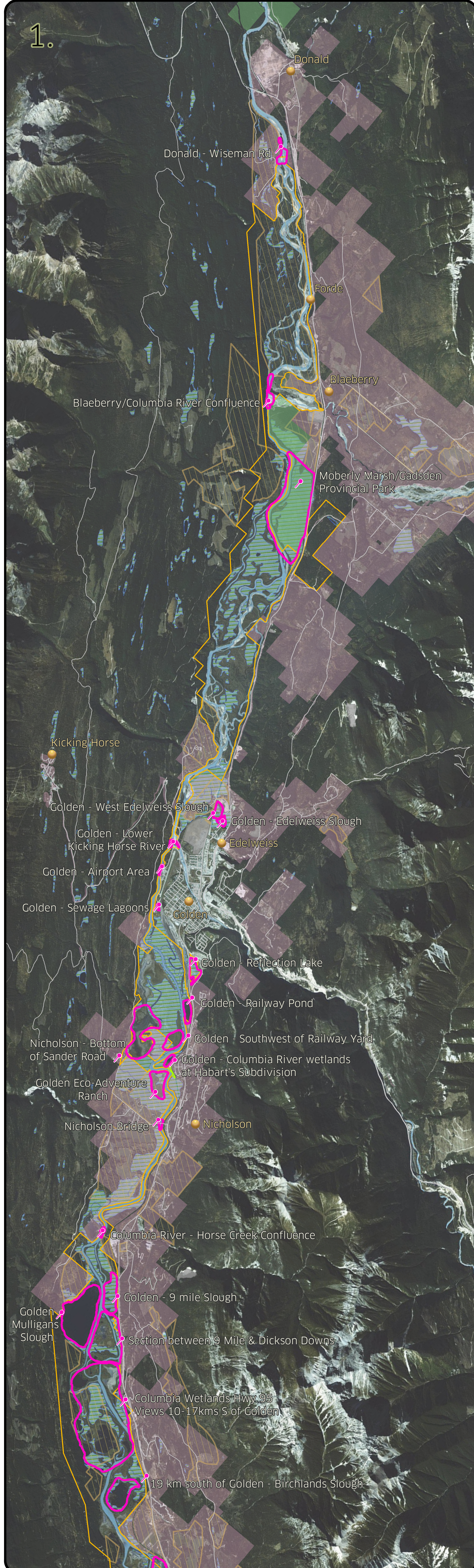
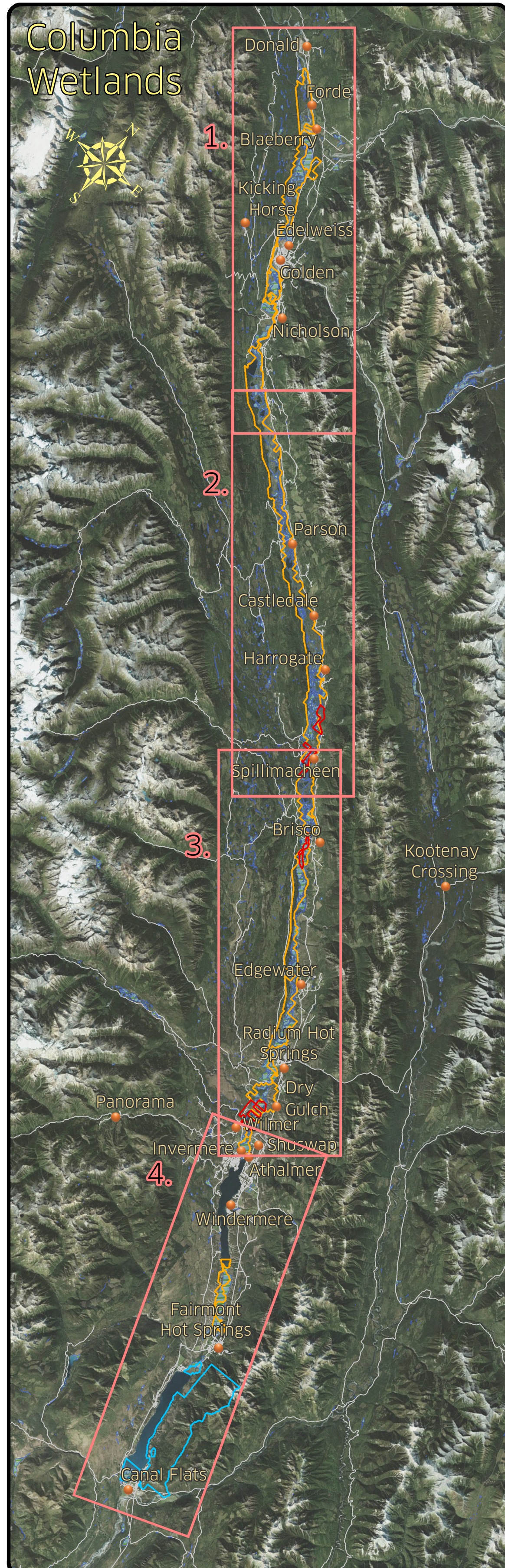
The Columbia Wetlands Waterbird Survey (CWWWS) was implemented in Spring 2015 and aims to run for at least 5 consecutive years. It is a project that uses citizen-scientists to gather important scientific data. Our hope is that this data will be useful for a variety of conservation purposes including possible Important Bird Area (IBA) designation for the Columbia Wetlands.

The main goals of the CWWS are to:

- collect baseline data currently lacking on our birds;
- initiate a coordinated bird count utilizing citizen-scientists during both spring and fall waterbird migrations;
- create a long-term volunteer opportunity for Columbia Valley residents;
- build increased appreciation and recognition for birds and their critical habitat in the Columbia Wetlands.

### Legend

- |  |                 |   |  |
|--|-----------------|---|--|
|  | Community       |  | Agricultural Land Reserve                        |
|  | Survey Site     |  | Survey Area                                      |
|  | Wetland         |  | Private Conservation Land                        |
|  | Provincial Park |  | National Wildlife Area                           |
|  | National Park   |  | Columbia Wetlands Wildlife Management Area       |
|  | Industrial Area |  | East Side Columbia Lake Wildlife Management Area |
|  | Private Land    |   |  |



1:65,000