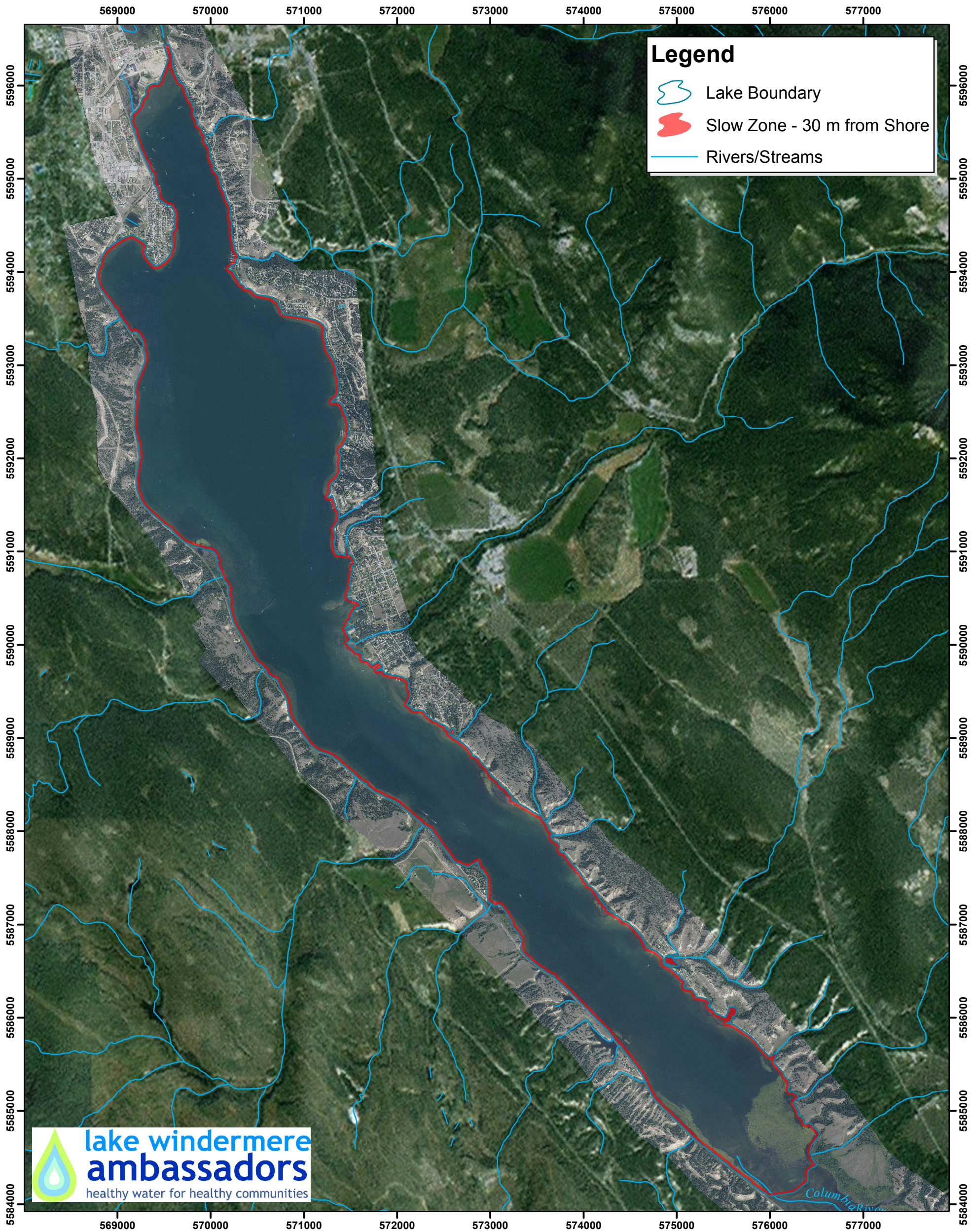
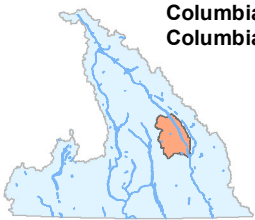


Lake Windermere Boundary & Zone of Provincial Shoreline Speed Restriction (10 km/hr)

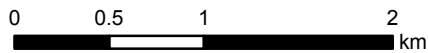


The vegetation classifications have been digitized with the use of 30cm resolution orthophotos at a minimum scale of 1:1,000

Data Sources:
Orthophoto Mosaic (captured in July 2008)
Ministry of Forests, Lands and Natural Resource Operation
Streams and lake boundary
Freshwater Atlas, GeoBC
(Integrated Land Management Bureau)
ESRI Basemap World Imagery



Lake Windermere is part of the
Columbia River watershed in the
Columbia Basin in British Columbia



Projection: UTM Zone 11N
Datum: North American Datum 1983
Scale: 1:40,000



Created by Kristen Milburn
Selkirk Geospatial Research Centre
October, 2011

