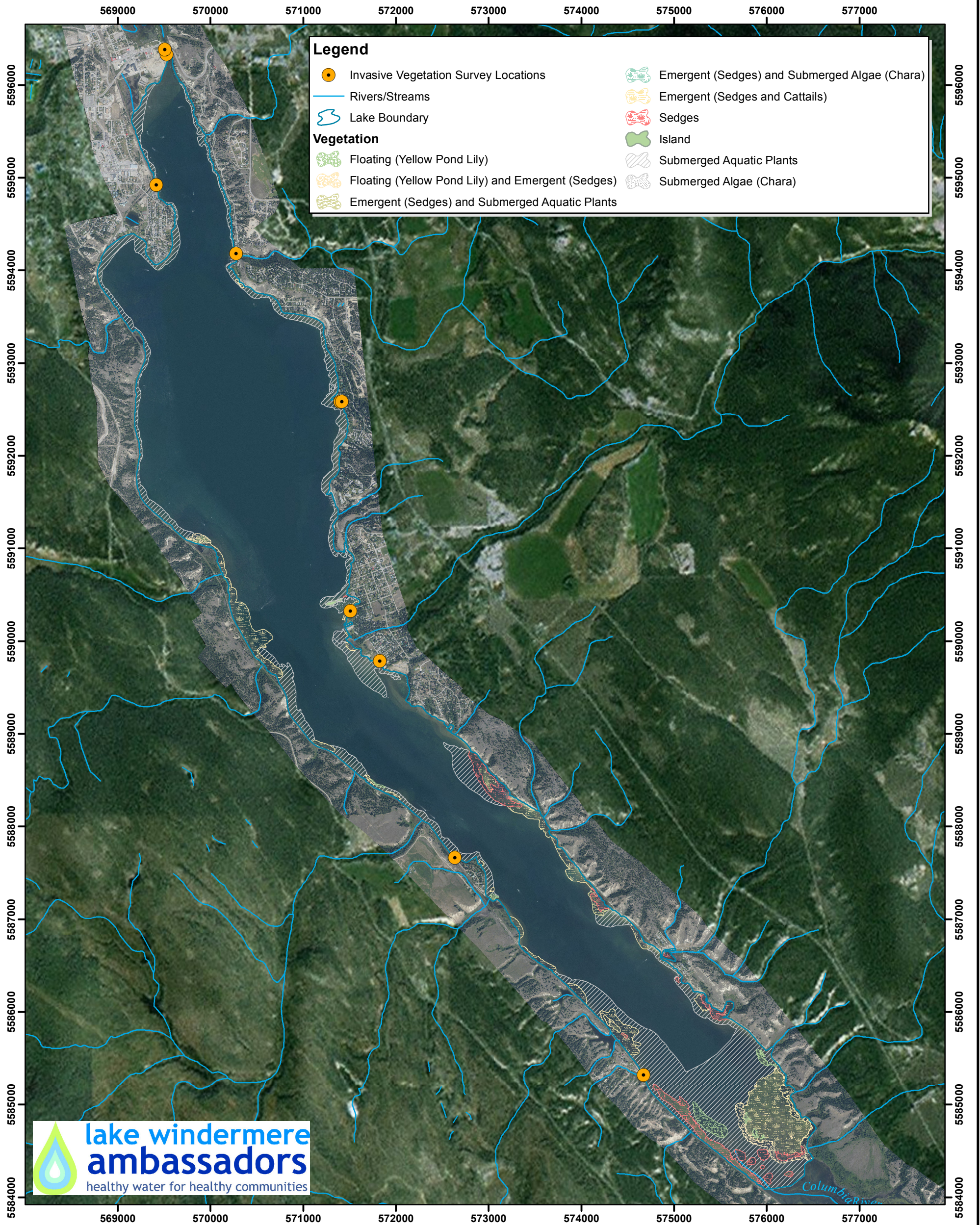


# Lake Windermere Aquatic Vegetation & Invasive Vegetation Survey Locations



The vegetation classifications have been digitized with the use of 30cm resolution orthophotos at a minimum scale of 1:1,000

**Data Sources:**

Orthophoto Mosaic (captured in July 2008)

Ministry of Forests, Lands and Natural Resource Operation

Streams and lake boundary

Freshwater Atlas, GeoBC

(Integrated Land Management Bureau)

ESRI Basemap World Imagery



Lake Windermere is part of the  
Columbia River watershed in the  
Columbia Basin in British Columbia

0 0.5 1 2 km

Projection: UTM Zone 11N  
Datum: North American Datum 1983  
Scale: 1:40,000

Created by Kristen Milburn  
Selkirk Geospatial Research Centre Selkirk College  
October, 2011