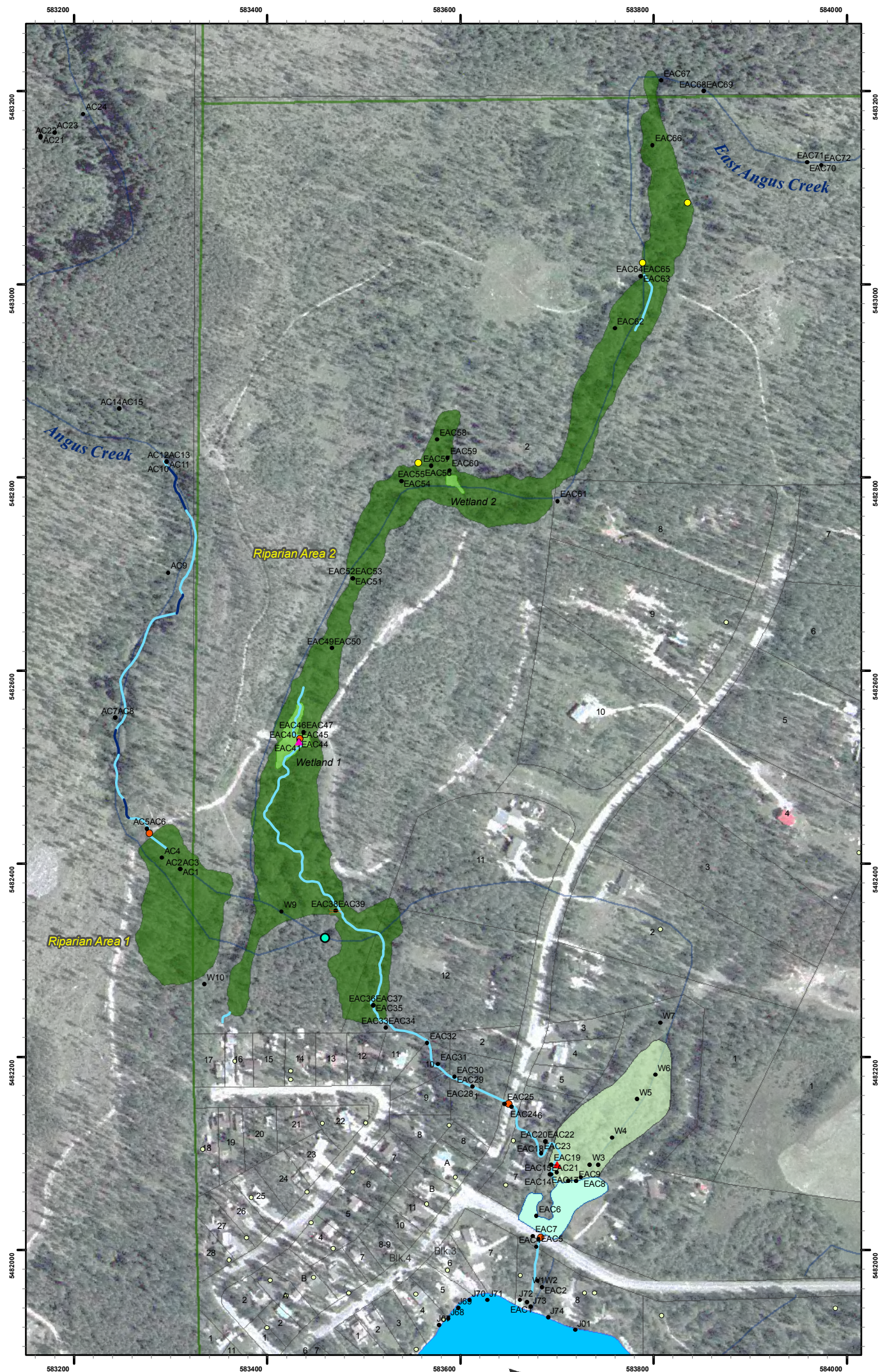


# 4. Jimsmith Lake Watershed: Angus and East Angus Creek Survey



UTM Zone 11N NAD 83

0 50 100 200 Meters

1:5,000

**Legend**

- Deep Water Quality Observations
- EAC Diversion Dam
- EAC Ref Site 1
- EAC Ref Site 2
- Interior Reforestation Co. Ltd. Data
- Stream
- Subsurface
- Surveyed Culvert
- Surveyed Seep
- Surveyed Wetlands
- Surveyed Pond
- Surveyed Riparian Areas
- Jimsmith Community Association
- Photo Points
- Groundwater Wells
- CWB Data
- Wetlands
- Lakes
- POD w/ licence info
- RDEK Data
- Streams
- District Lot Lines
- Property Boundaries

**Data Sources:**

Angus Creek and East Angus Creek Survey Data:  
Interior Reforestation Co. Ltd., June 2010

Corporate Watershed Base Data (CWB): 1:20,000 GeoBC BCGOV  
ILMB Crown Registry and Geographic Branch (CRGB) (LRDW)

Orthophoto BC 82gs 1m, 1995-2004 GeoBC

Streams Data: Regional District of the East Kootenay

Groundwater Wells: GeoBC BCGOV ILMB Crown  
Registry and Geographic Branch (CRGB) (LRDW)

Photo Points: Jimsmith Lake Community Association