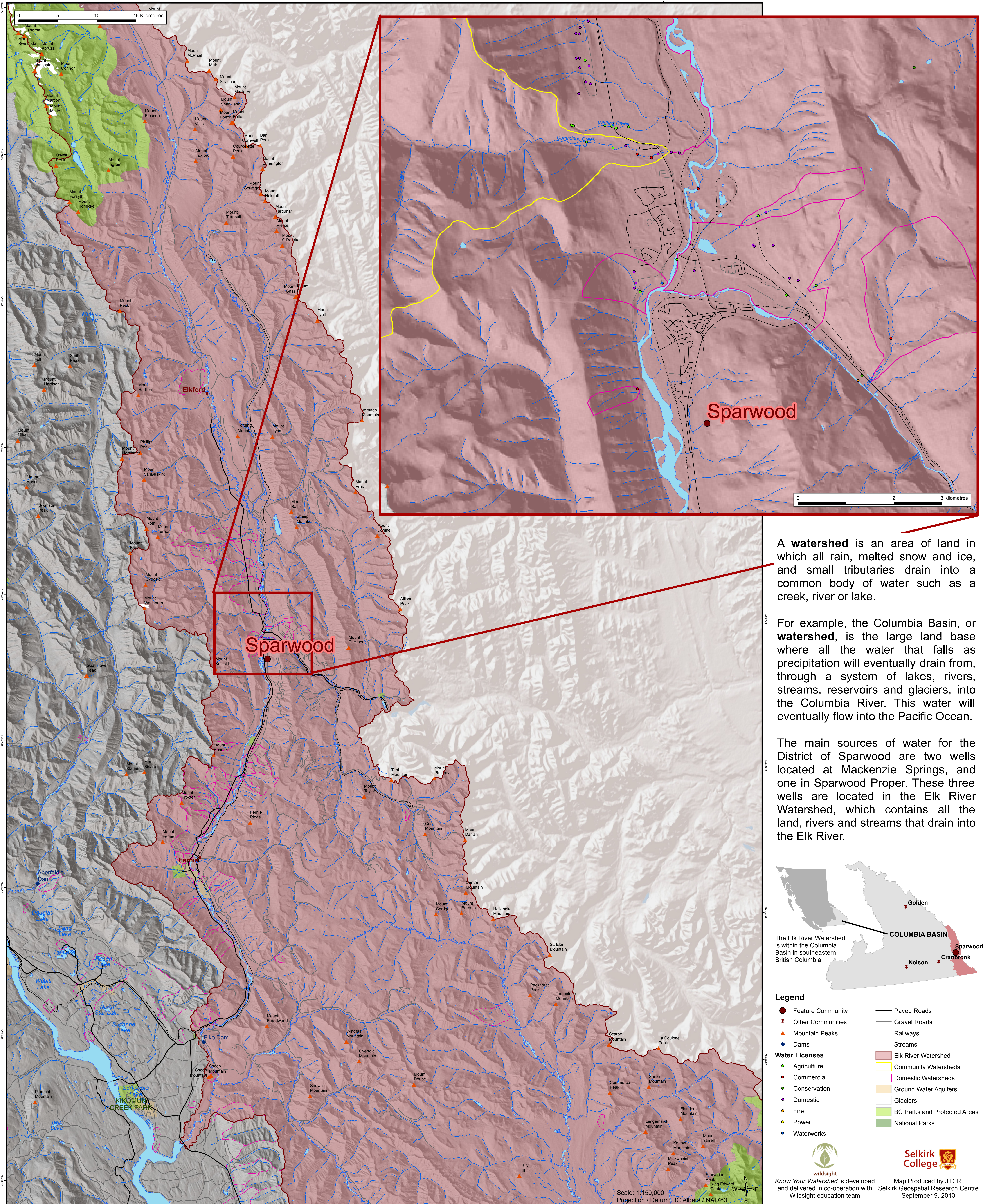


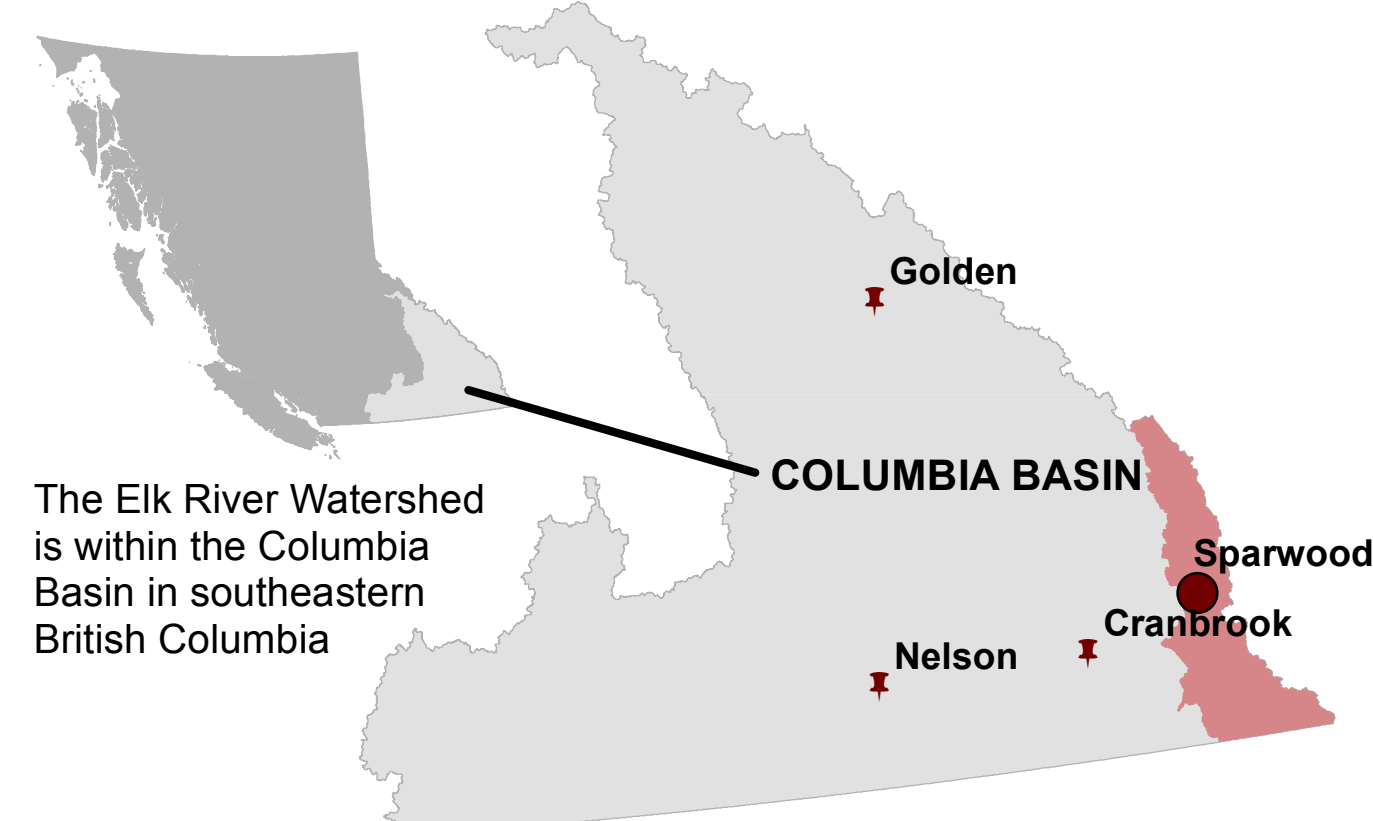
# Elk River Watershed



A **watershed** is an area of land in which all rain, melted snow and ice, and small tributaries drain into a common body of water such as a creek, river or lake.

For example, the Columbia Basin, or **watershed**, is the large land base where all the water that falls as precipitation will eventually drain from, through a system of lakes, rivers, streams, reservoirs and glaciers, into the Columbia River. This water will eventually flow into the Pacific Ocean.

The main sources of water for the District of Sparwood are two wells located at Mackenzie Springs, and one in Sparwood Proper. These three wells are located in the Elk River Watershed, which contains all the land, rivers and streams that drain into the Elk River.



- Legend**
- Feature Community
  - Other Communities
  - ▲ Mountain Peaks
  - ◆ Dams
  - Agriculture
  - Commercial
  - Conservation
  - Domestic
  - Fire
  - Power
  - Waterworks
  - Paved Roads
  - Gravel Roads
  - Railways
  - Streams
  - Elk River Watershed
  - Community Watersheds
  - Domestic Watersheds
  - Ground Water Aquifers
  - Glaciers
  - BC Parks and Protected Areas
  - National Parks