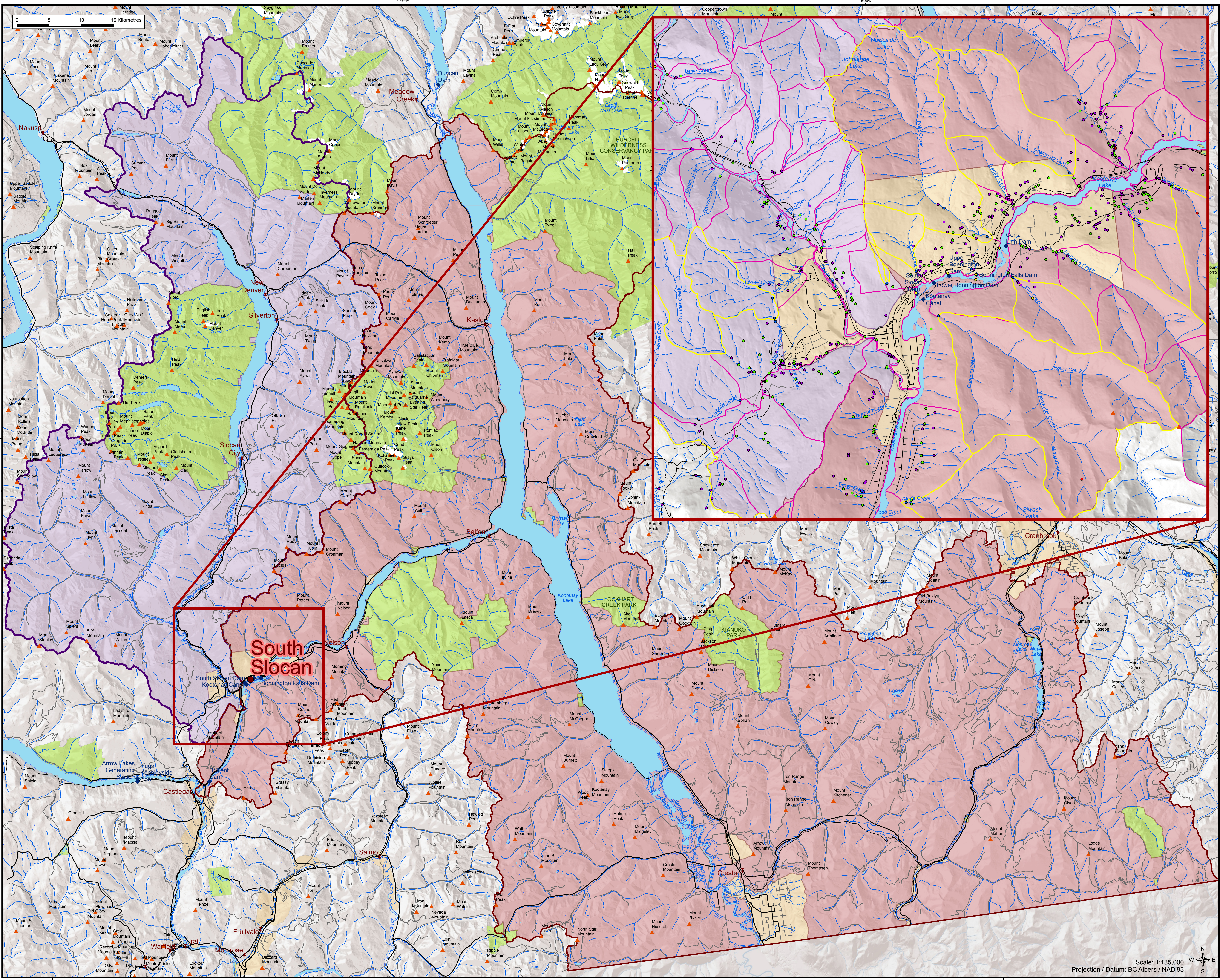
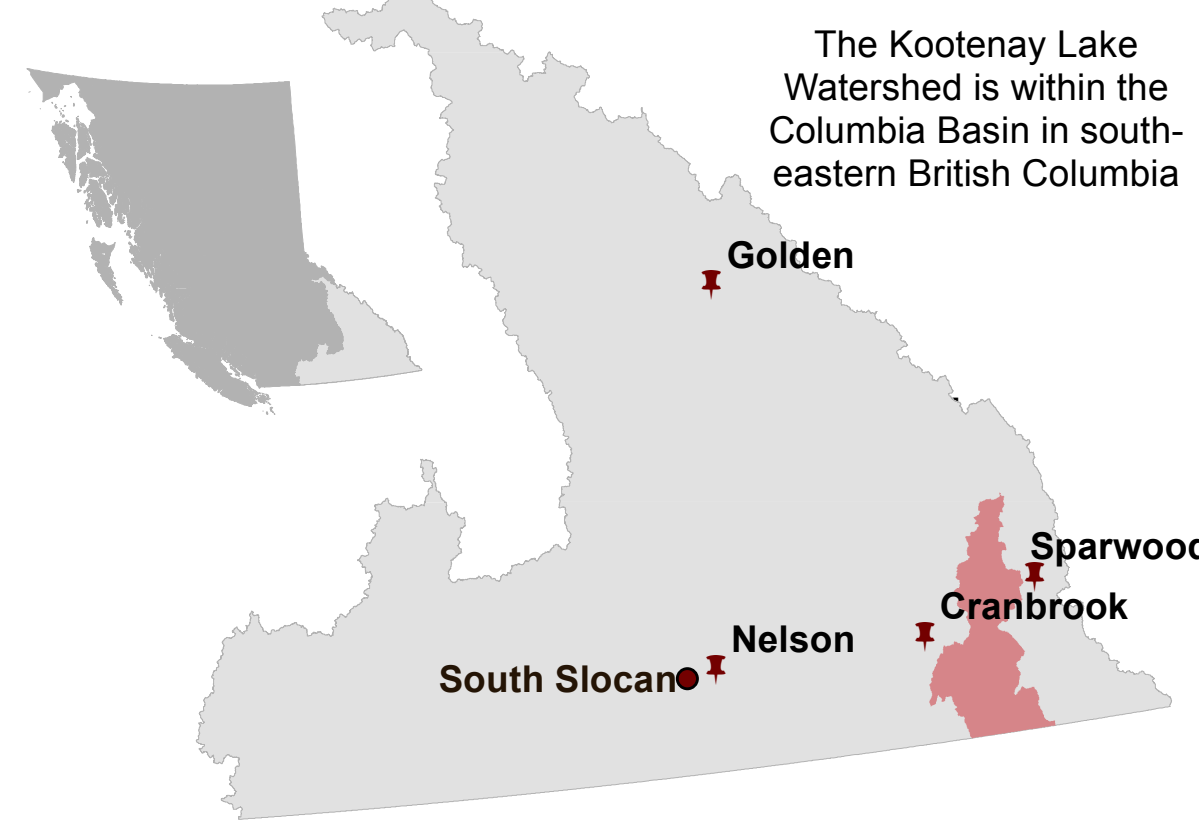


Slocan River & Kootenay Lake Watershed

A **watershed** is an area of land in which all rain, melted snow and ice, and small tributaries drain into a common body of water such as a creek, river or lake.

For example, the Columbia Basin, or **watershed**, is the large land base where all the water that falls as precipitation will eventually drain from, through a system of lakes, rivers, streams, reservoirs and glaciers, into the Columbia River. This water will eventually flow into the Pacific Ocean.

The residents of South Slocan get their water from private wells located in the Slocan River and Kootenay Lake Watersheds. These watersheds contain all the land, rivers and streams that drain directly into Kootenay Lake, Kootenay River and The Slocan River, joining the waters of the upstream Kootenay River.



- Legend**
- Feature Community
 - ▲ Mountain Peaks
 - Dams
 - Water Licenses**
 - Agriculture
 - Commercial
 - Conservation
 - Domestic
 - Fire
 - Power
 - Waterworks
 - Paved Roads
 - Gravel Roads
 - Railways
 - Streams
 - Slocan River Watershed
 - Kootenay Lake Watershed
 - Community Watersheds
 - Domestic Watersheds
 - Ground Water Aquifers
 - Glaciers
 - BC Parks and Protected Areas
 - National Parks