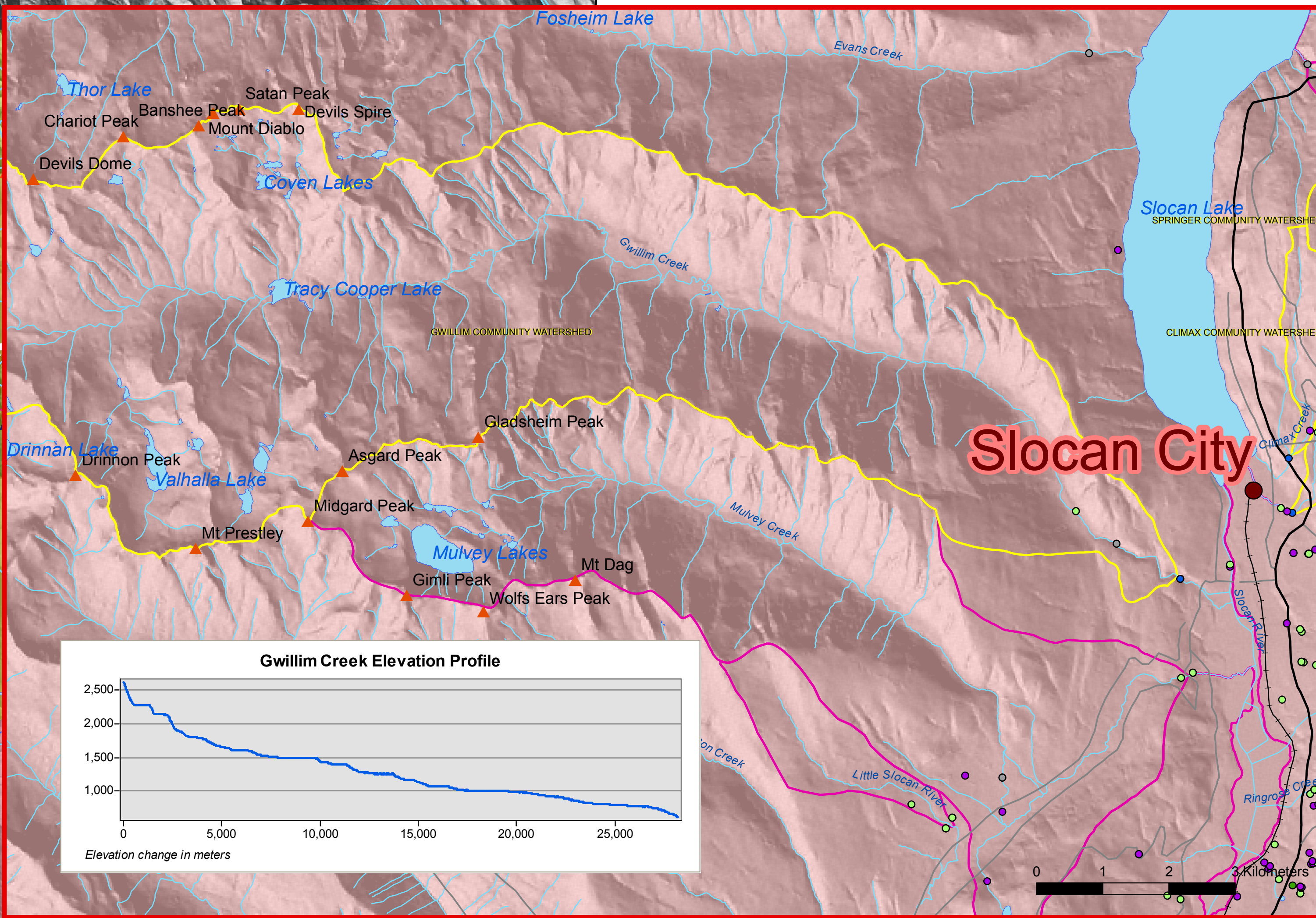
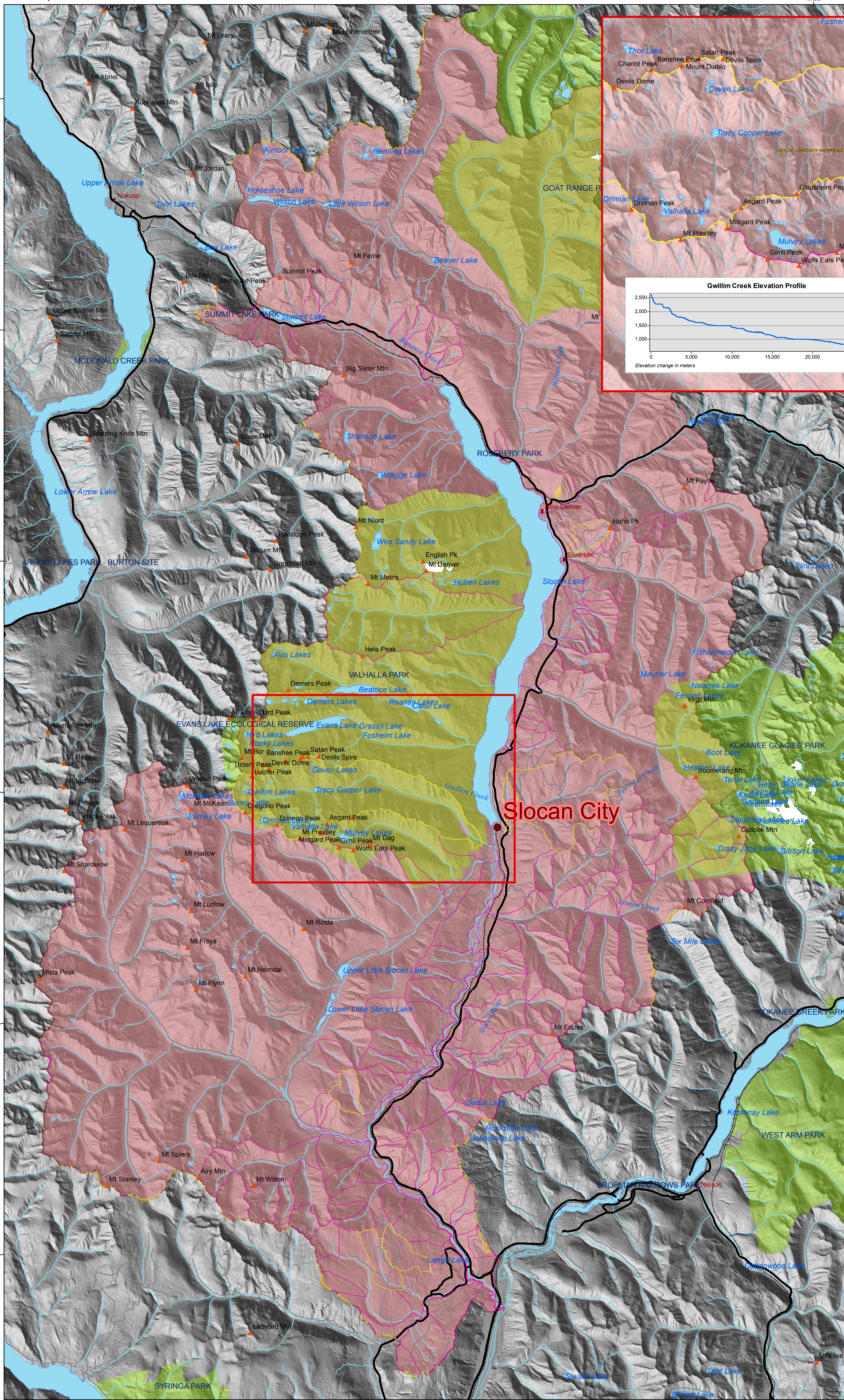


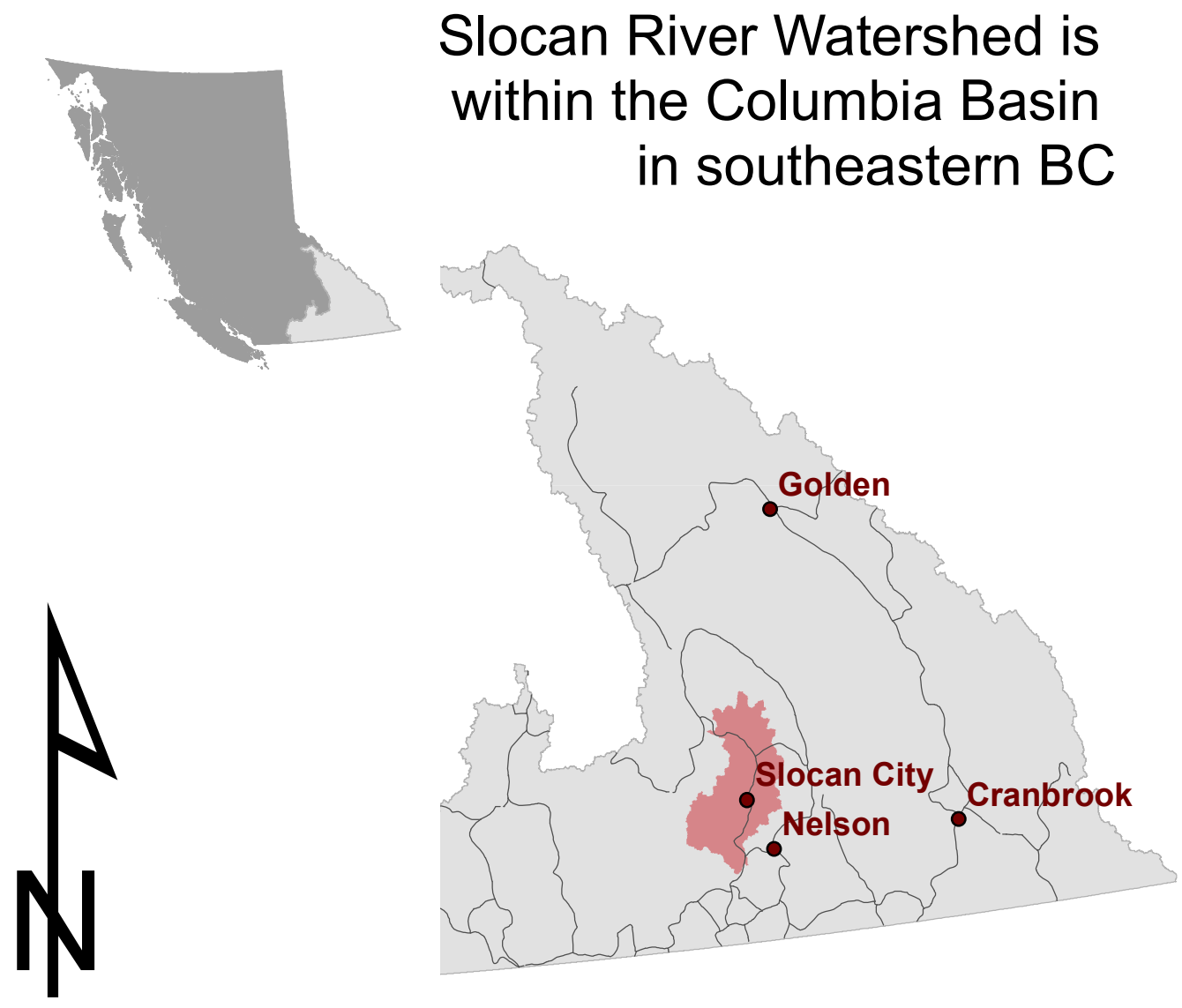
Slocan River



A **watershed** is an area of land in which all rain and snow runoff and small tributaries drain into a common body of water such as a creek, river or lake.

For example, the Columbia Basin, or **watershed**, is the large land base where all the water that falls as precipitation will eventually drain from, through a system of lakes, rivers, streams, reservoirs and glaciers, into the Columbia River. This water will eventually flow into the Pacific Ocean.

Slocan River Watershed contains all the land, rivers and streams that drain into the Slocan River and Slocan Lake.



- Legend**
- Water Licences**
 - COMMERCIAL
 - CONSERVATION
 - DOMESTIC
 - AGRICULTURE
 - MINING
 - POWER
 - WATERWORKS
 - ▲ Mountain Peaks
 - Communities
 - Other Communities
 - Transportation**
 - Rail
 - Gravel Roads
 - Paved Roads
 - Rivers
 - Community Watershed
 - Domestic Watershed
 - Glaciers
 - Lakes
 - BC Parks and protected areas
 - National Parks
 - Slocan River Watershed