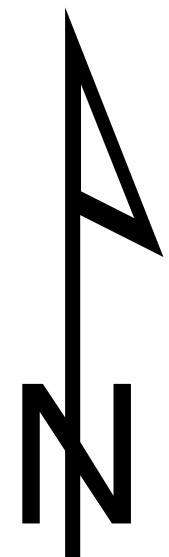
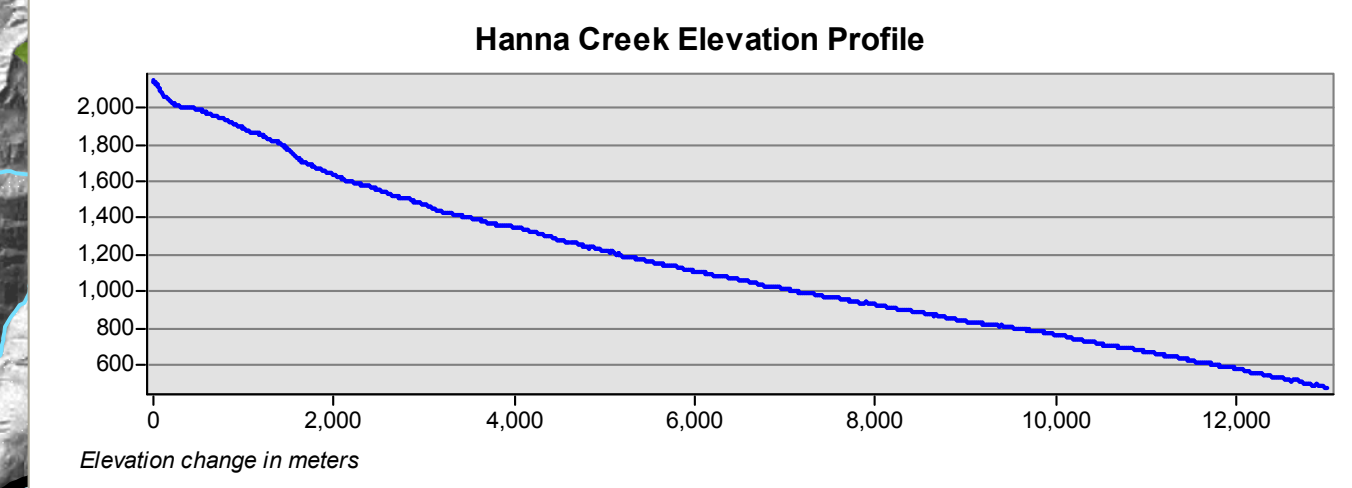
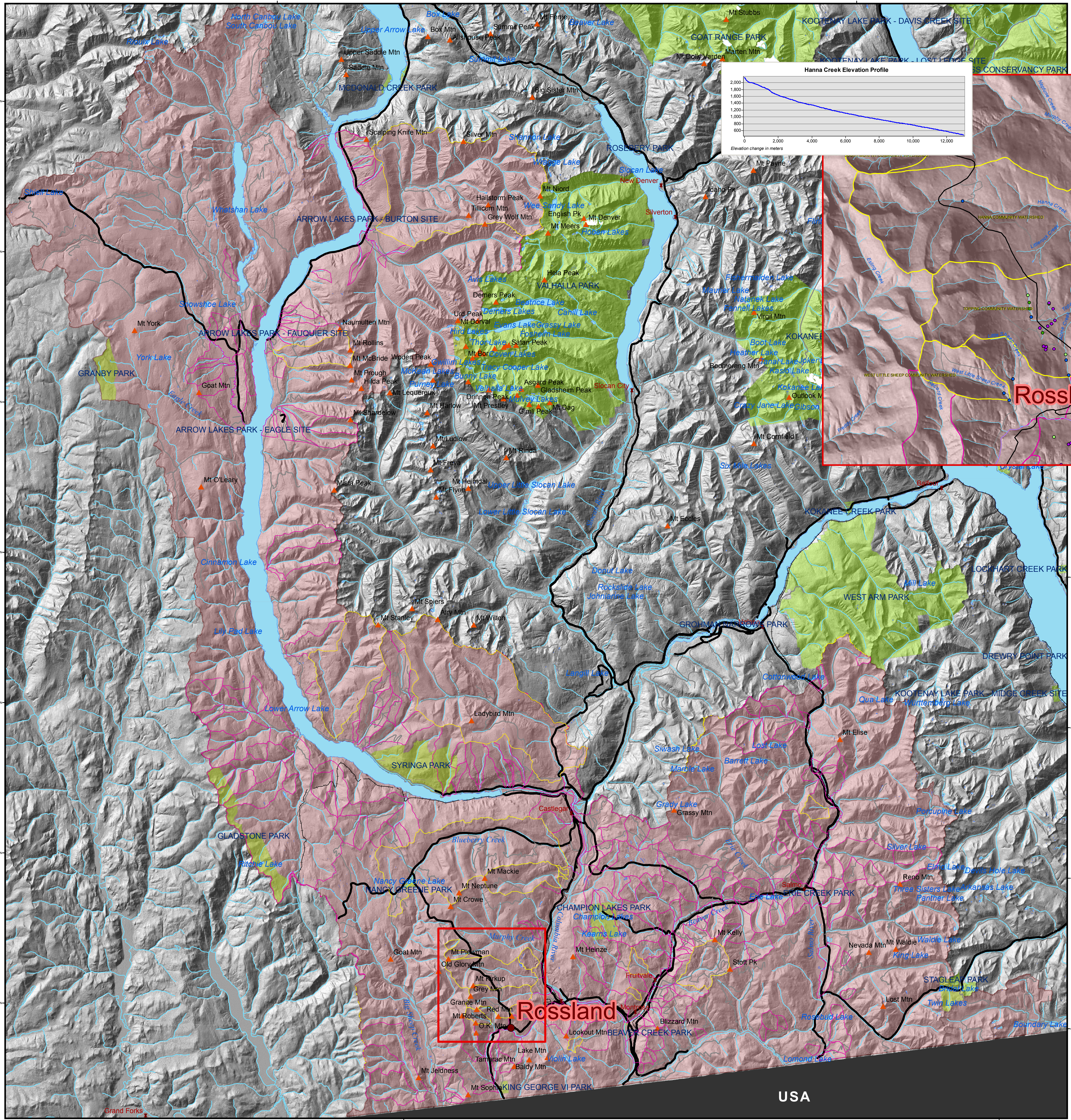


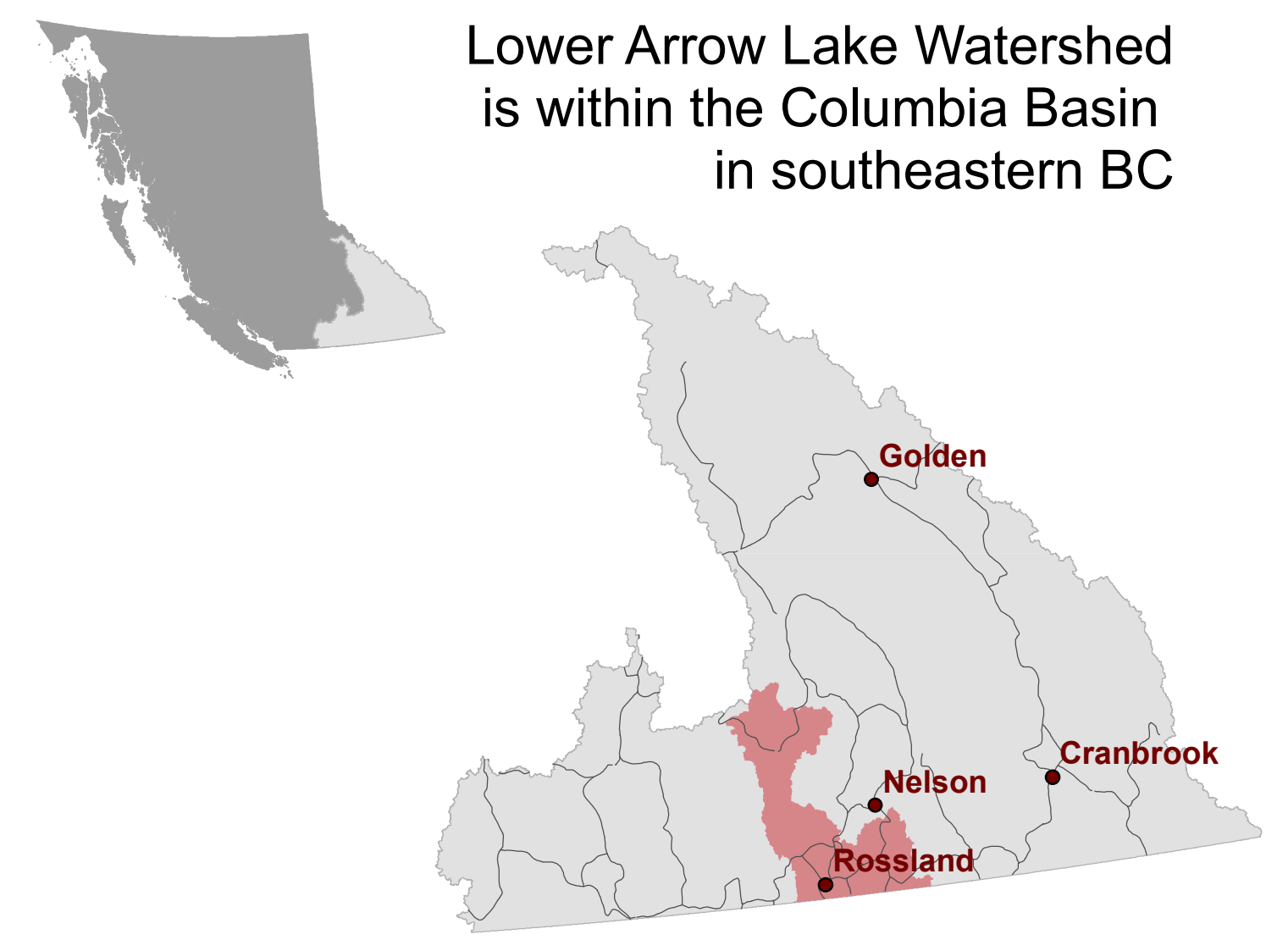
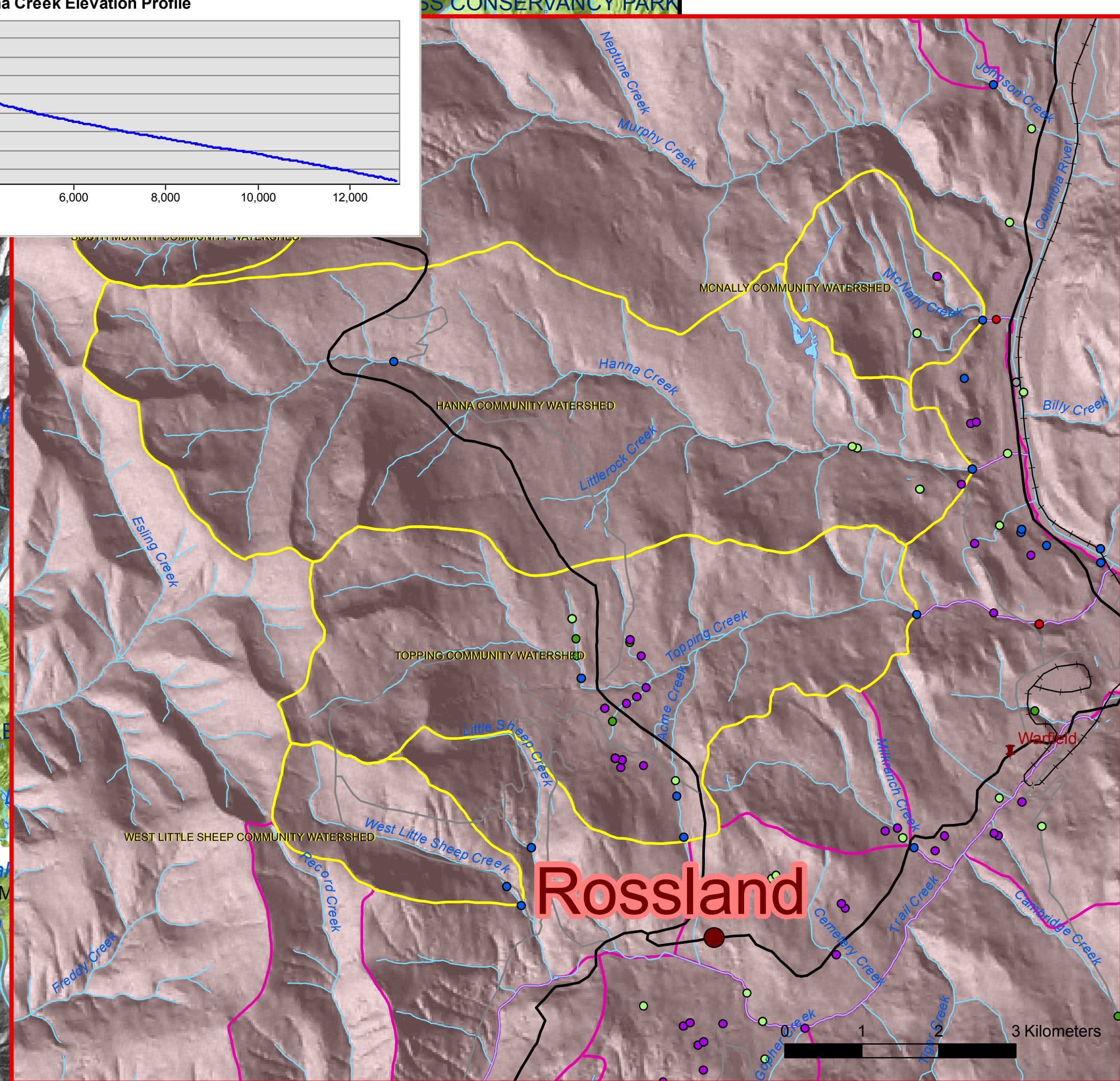
Lower Arrow Lake



A **watershed** is an area of land in which all rain and snow runoff and small tributaries drain into a common body of water such as a creek, river or lake.

For example, the Columbia Basin, or **watershed**, is the large land base where all the water that falls as precipitation will eventually drain from, through a system of lakes, rivers, streams, reservoirs and glaciers, into the Columbia River. This water will eventually flow into the Pacific Ocean.

Lower Arrow Lake Watershed contains all the land, rivers and streams that drain into Lower Arrow Lake.



Lower Arrow Lake Watershed is within the Columbia Basin in southeastern BC

Legend

- | | |
|-----------------------|--------------------------------|
| Water Licences | Transportation |
| ● COMMERCIAL | — Rail |
| ● CONSERVATION | — Gravel Roads |
| ● DOMESTIC | — Paved Roads |
| ● AGRICULTURE | — Rivers |
| ● FIRE | □ Community Watershed |
| ● POWER | □ Domestic Watershed |
| ● WATERWORKS | □ Glaciers |
| ▲ Mountain Peaks | □ Lakes |
| ● Communities | ■ BC Parks and protected areas |
| ✚ Other Communities | ■ National Parks |
| | ■ Lower Arrow Lake |