

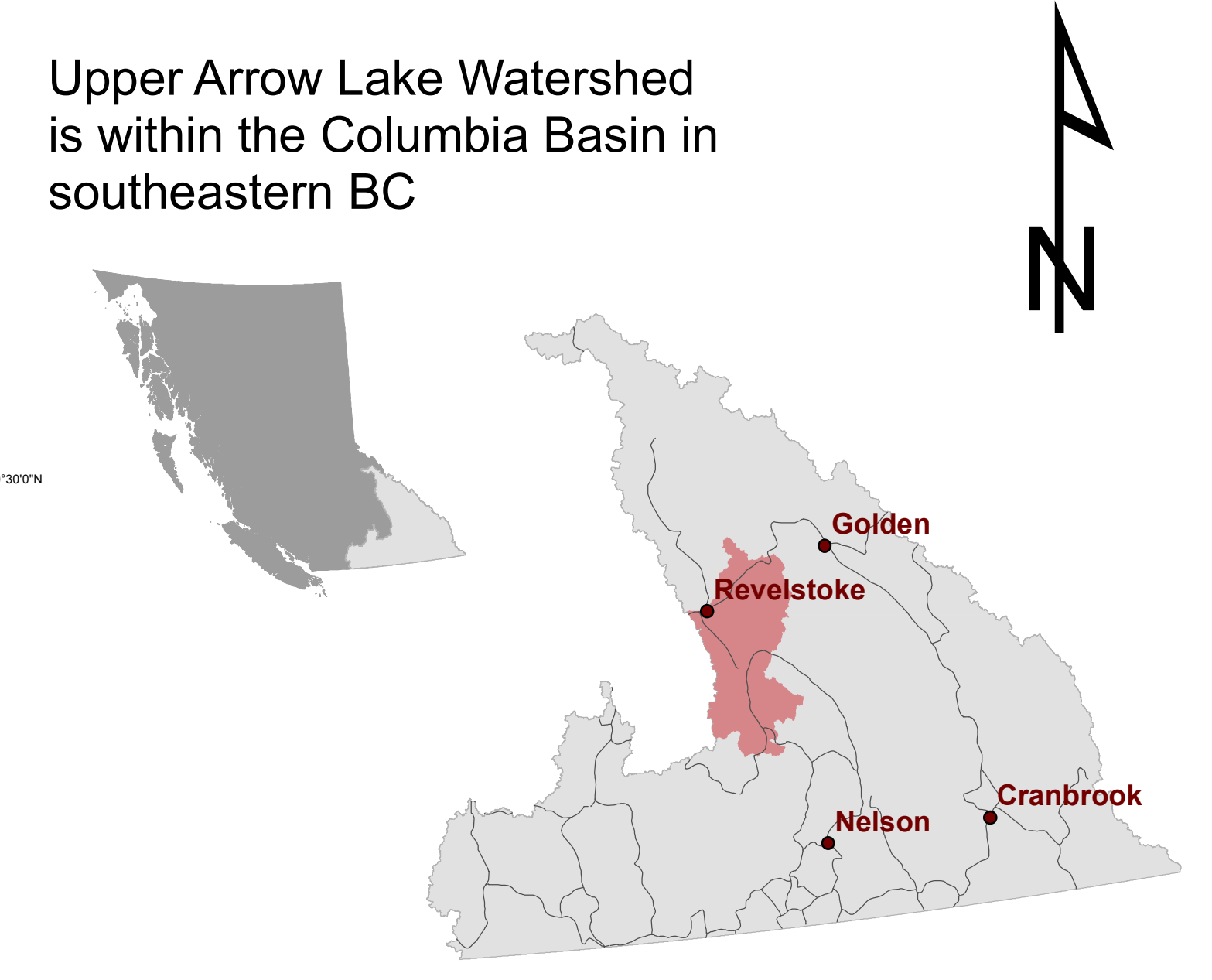
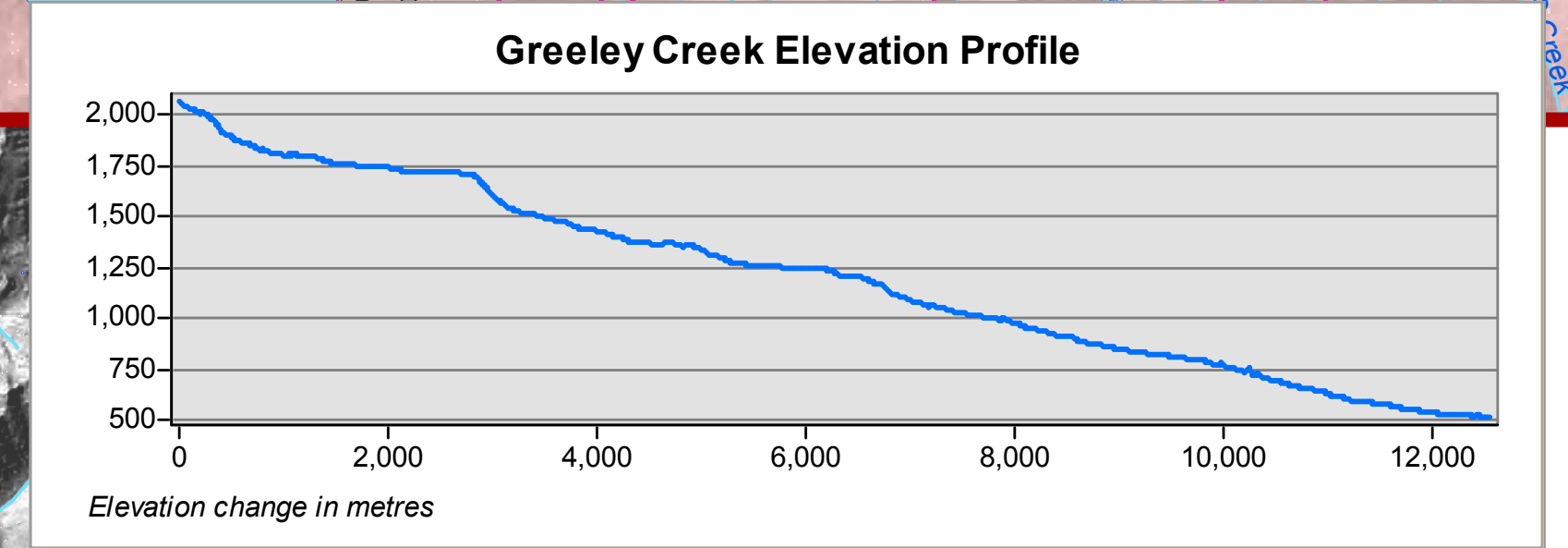
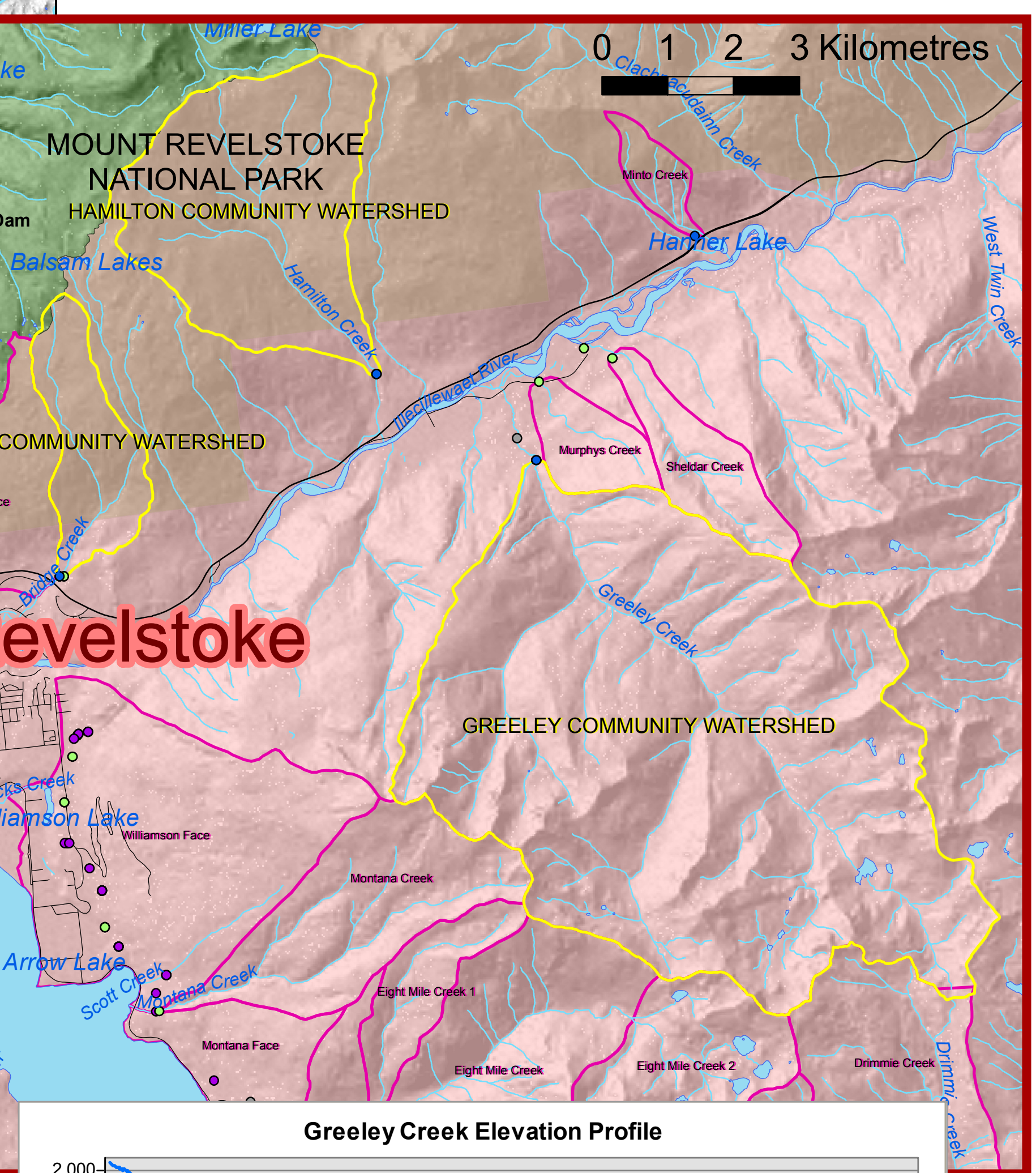
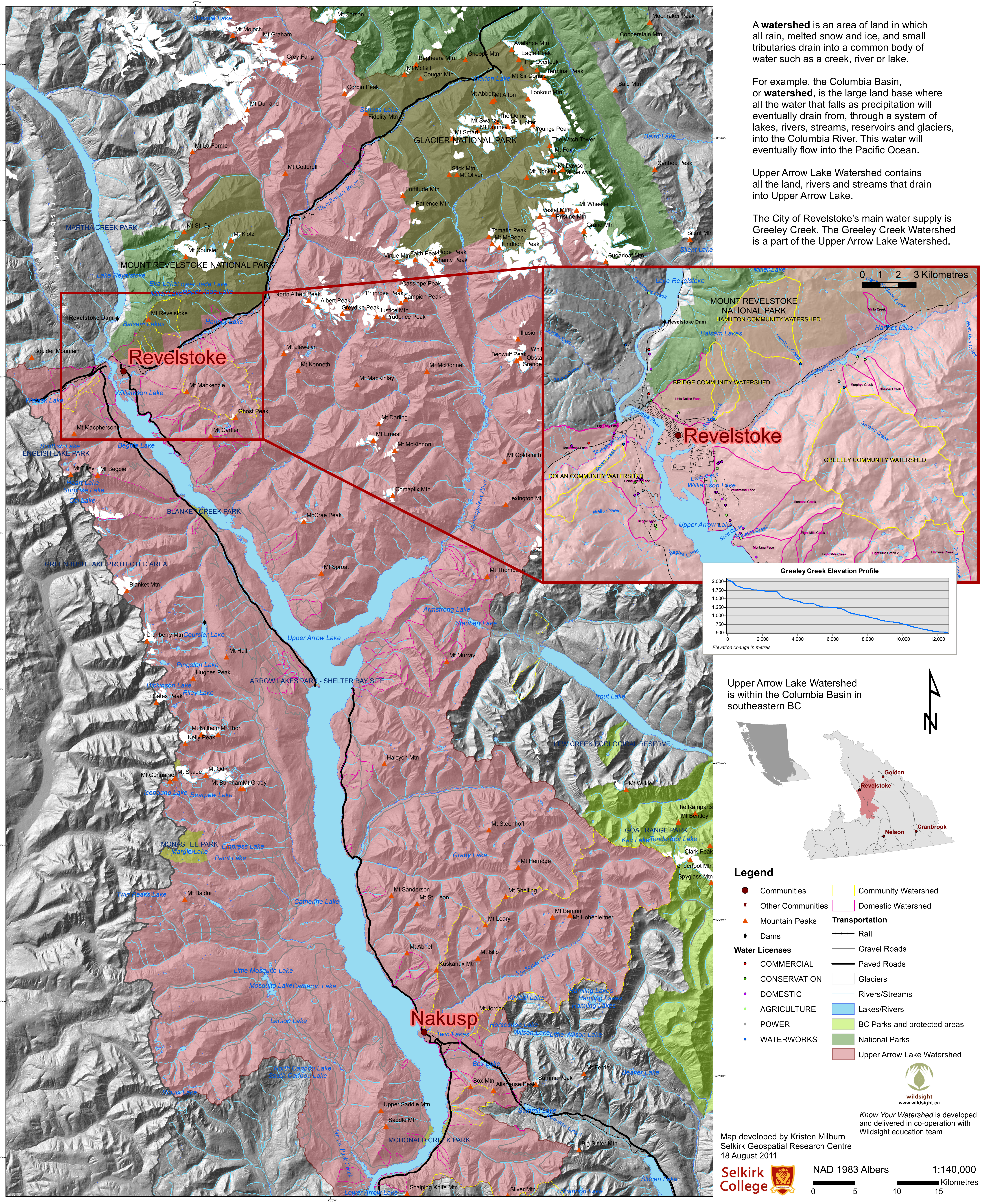
# Upper Arrow Lake

A **watershed** is an area of land in which all rain, melted snow and ice, and small tributaries drain into a common body of water such as a creek, river or lake.

For example, the Columbia Basin, or **watershed**, is the large land base where all the water that falls as precipitation will eventually drain from, through a system of lakes, rivers, streams, reservoirs and glaciers, into the Columbia River. This water will eventually flow into the Pacific Ocean.

Upper Arrow Lake Watershed contains all the land, rivers and streams that drain into Upper Arrow Lake.

The City of Revelstoke's main water supply is Greeley Creek. The Greeley Creek Watershed is a part of the Upper Arrow Lake Watershed.



- Legend**
- Communities
  - ✦ Other Communities
  - ▲ Mountain Peaks
  - ◆ Dams
  - COMMERCIAL
  - CONSERVATION
  - DOMESTIC
  - AGRICULTURE
  - POWER
  - WATERWORKS
  - Community Watershed
  - Domestic Watershed
  - Transportation**
  - Rail
  - Gravel Roads
  - Paved Roads
  - Glaciers
  - Rivers/Streams
  - Lakes/Rivers
  - BC Parks and protected areas
  - National Parks
  - Upper Arrow Lake Watershed

Map developed by Kristen Milburn  
 Selkirk Geospatial Research Centre  
 18 August 2011



NAD 1983 Albers 1:140,000  
 0 5 10 15 Kilometres

wildsight  
 www.wildsight.ca  
 Know Your Watershed is developed and delivered in co-operation with Wildsight education team