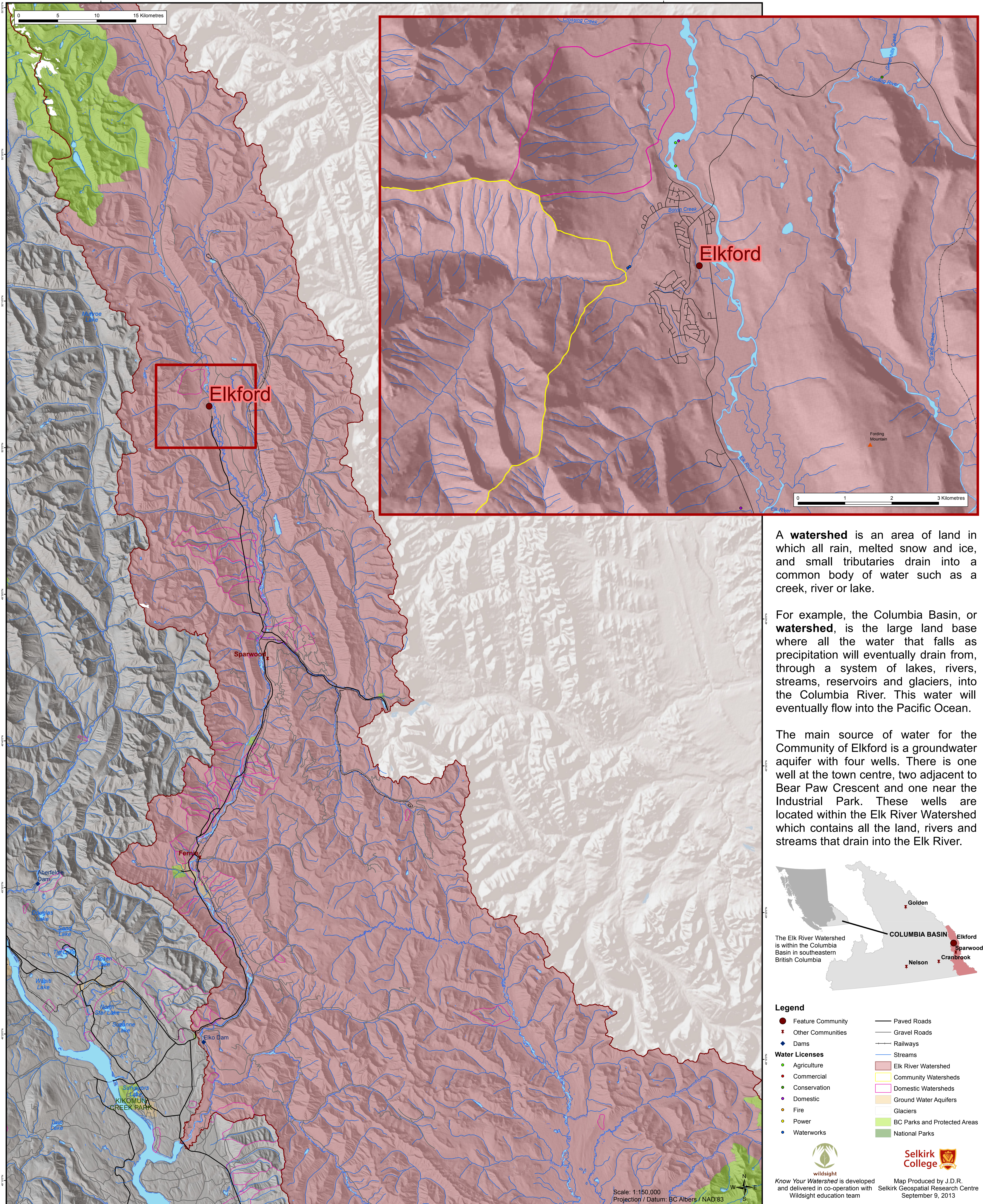


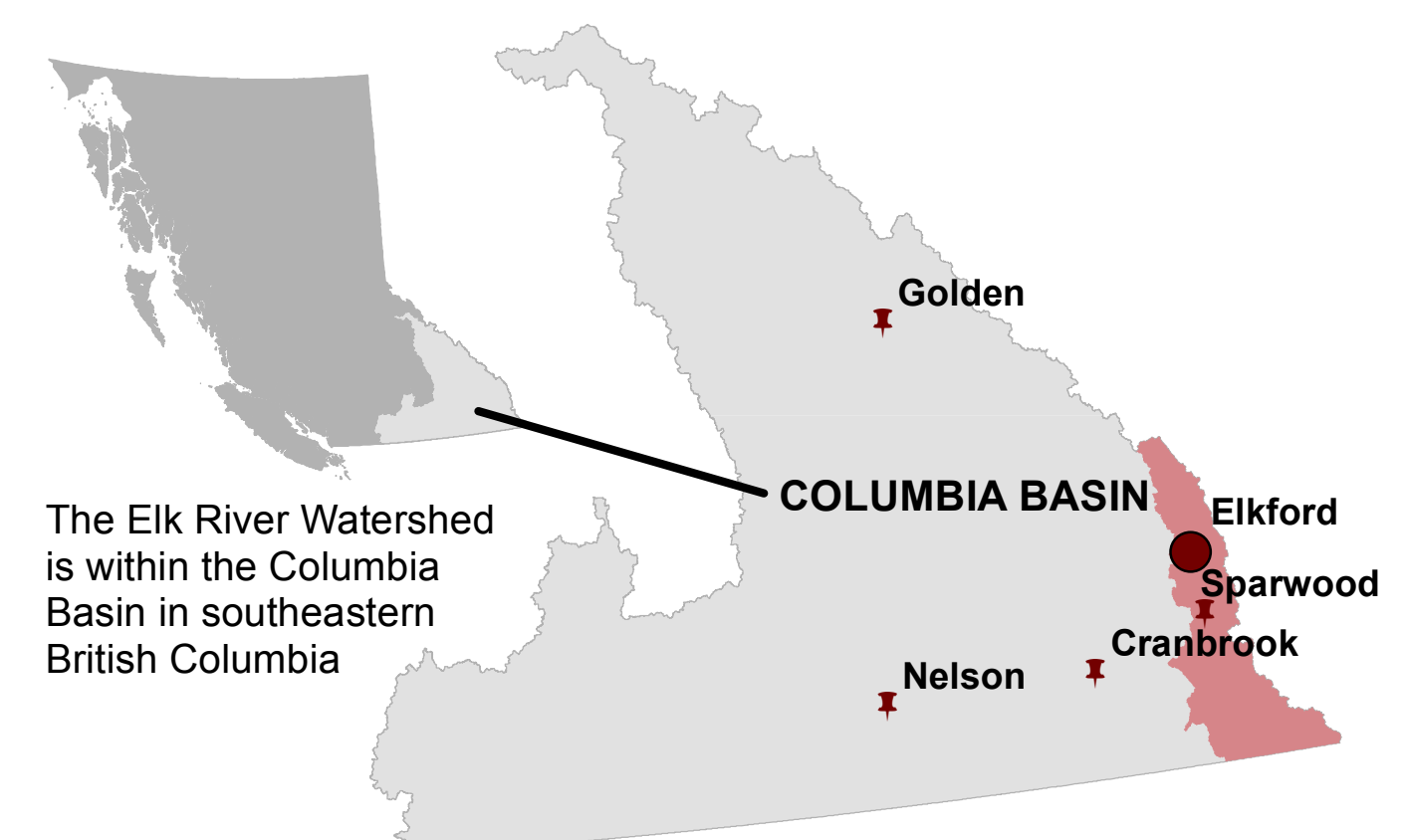
Elk River Watershed



A **watershed** is an area of land in which all rain, melted snow and ice, and small tributaries drain into a common body of water such as a creek, river or lake.

For example, the Columbia Basin, or **watershed**, is the large land base where all the water that falls as precipitation will eventually drain from, through a system of lakes, rivers, streams, reservoirs and glaciers, into the Columbia River. This water will eventually flow into the Pacific Ocean.

The main source of water for the Community of Elkford is a groundwater aquifer with four wells. There is one well at the town centre, two adjacent to Bear Paw Crescent and one near the Industrial Park. These wells are located within the Elk River Watershed which contains all the land, rivers and streams that drain into the Elk River.



- Legend**
- Feature Community
 - ✚ Other Communities
 - ◆ Dams
 - Agriculture
 - Commercial
 - Conservation
 - Domestic
 - Fire
 - Power
 - Waterworks
 - Paved Roads
 - Gravel Roads
 - Railways
 - Streams
 - Elk River Watershed
 - Community Watersheds
 - Domestic Watersheds
 - Ground Water Aquifers
 - Glaciers
 - BC Parks and Protected Areas
 - National Parks