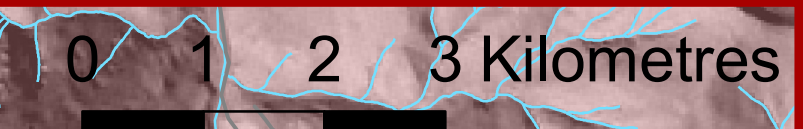
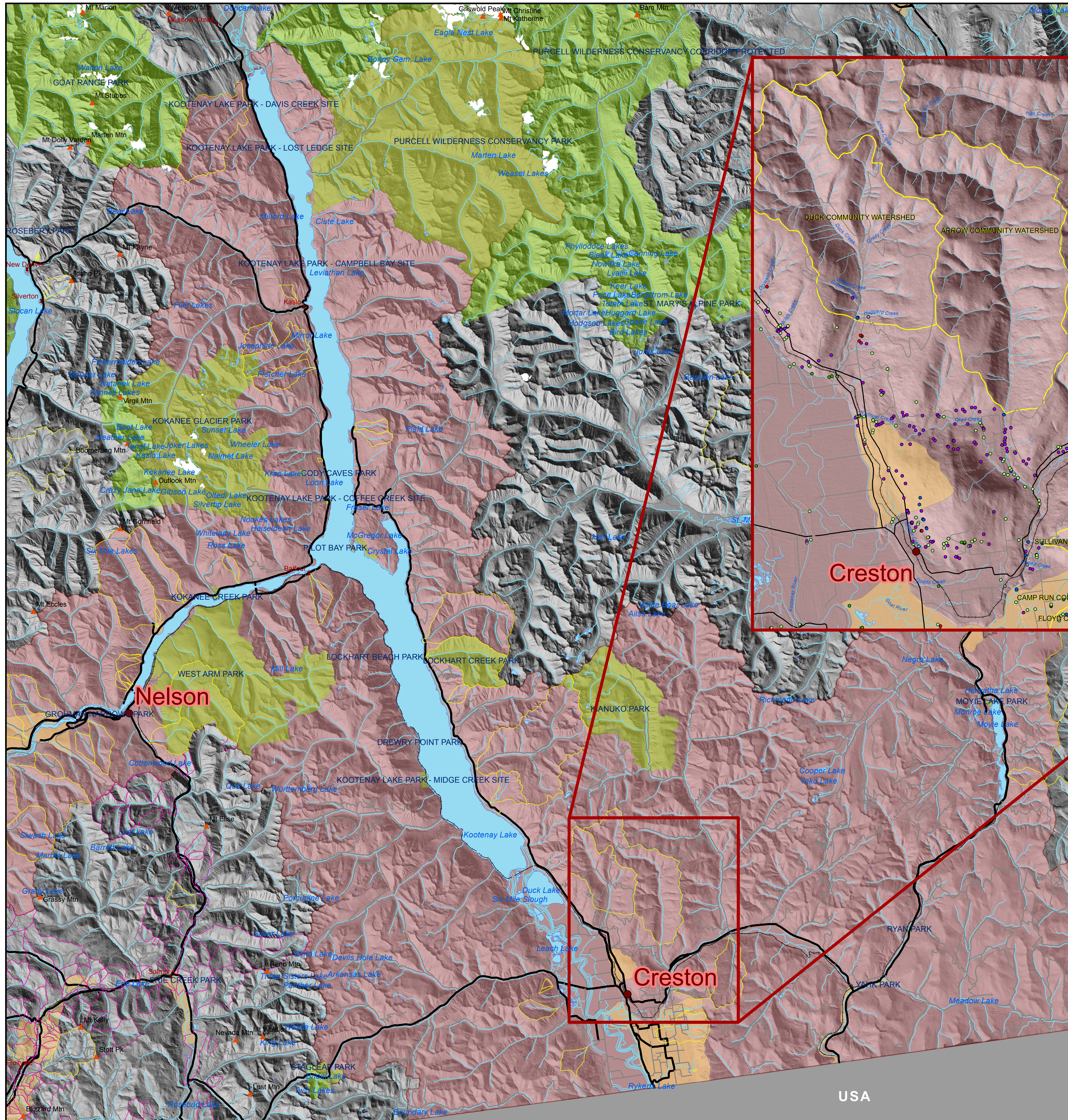


Kootenay Lake

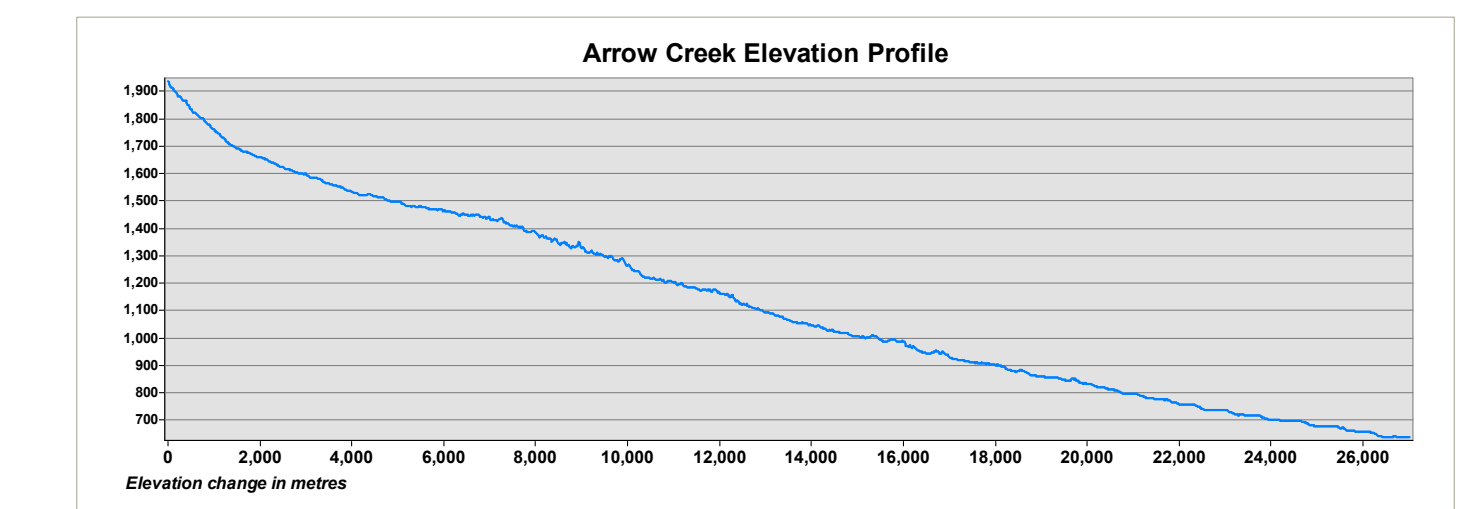


A **watershed** is an area of land in which all rain and snow runoff and small tributaries drain into a common body of water such as a creek, river or lake.

For example, the Columbia Basin, or **watershed**, is the large land base where all the water that falls as precipitation will eventually drain from, through a system of lakes, rivers, streams, reservoirs and glaciers, into the Columbia River. This water will eventually flow into the Pacific Ocean.

Kootenay Lake Watershed contains all the land, rivers and streams that drain into Kootenay Lake.

Water for the Town of Creston is sourced from Arrow Creek. The Arrow Creek Watershed is part of the Kootenay Lake Watershed.

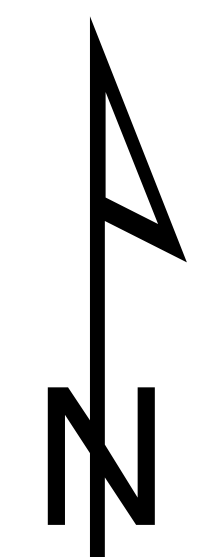
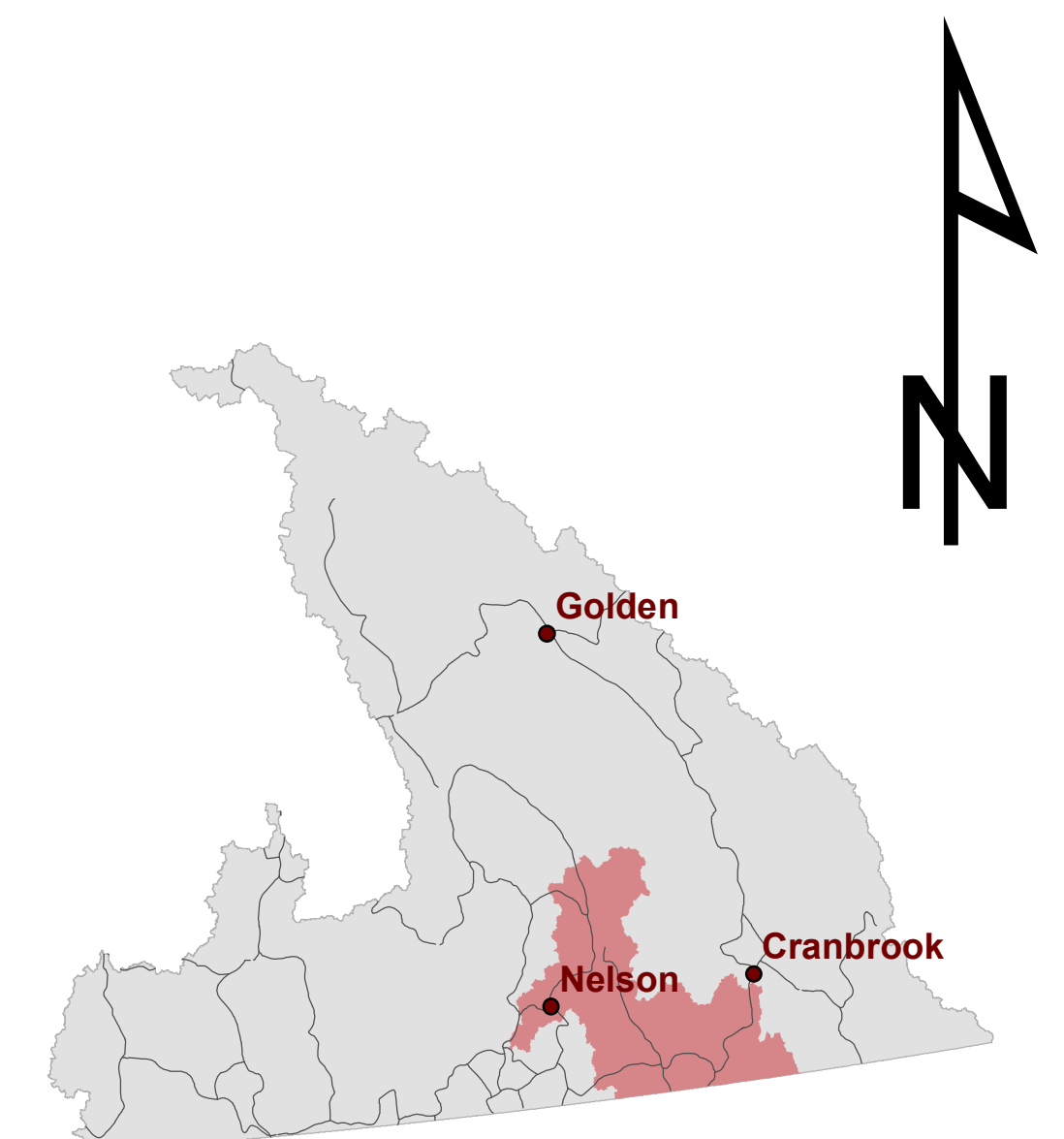


Legend

- ▲ Mountain Peaks
- Communities
- ★ Other Communities
- COMMERCIAL
- CONSERVATION
- DOMESTIC
- AGRICULTURE
- FIRE
- POWER
- WATERWORKS
- Rail
- Gravel Roads
- Paved Roads
- Rivers
- Community Watershed
- Domestic Watershed
- Glaciers
- Ground Water Aquifer
- Lakes
- BC Parks and protected areas
- National Parks
- Kootenay Lake



Kootenay Lake Watershed is within the Columbia Basin in southeastern BC



Know Your Watershed is developed and delivered in co-operation with Wildsight education team

Map designed by Kristen Milburn
Selkirk Geospatial Research Centre
22 August 2011

