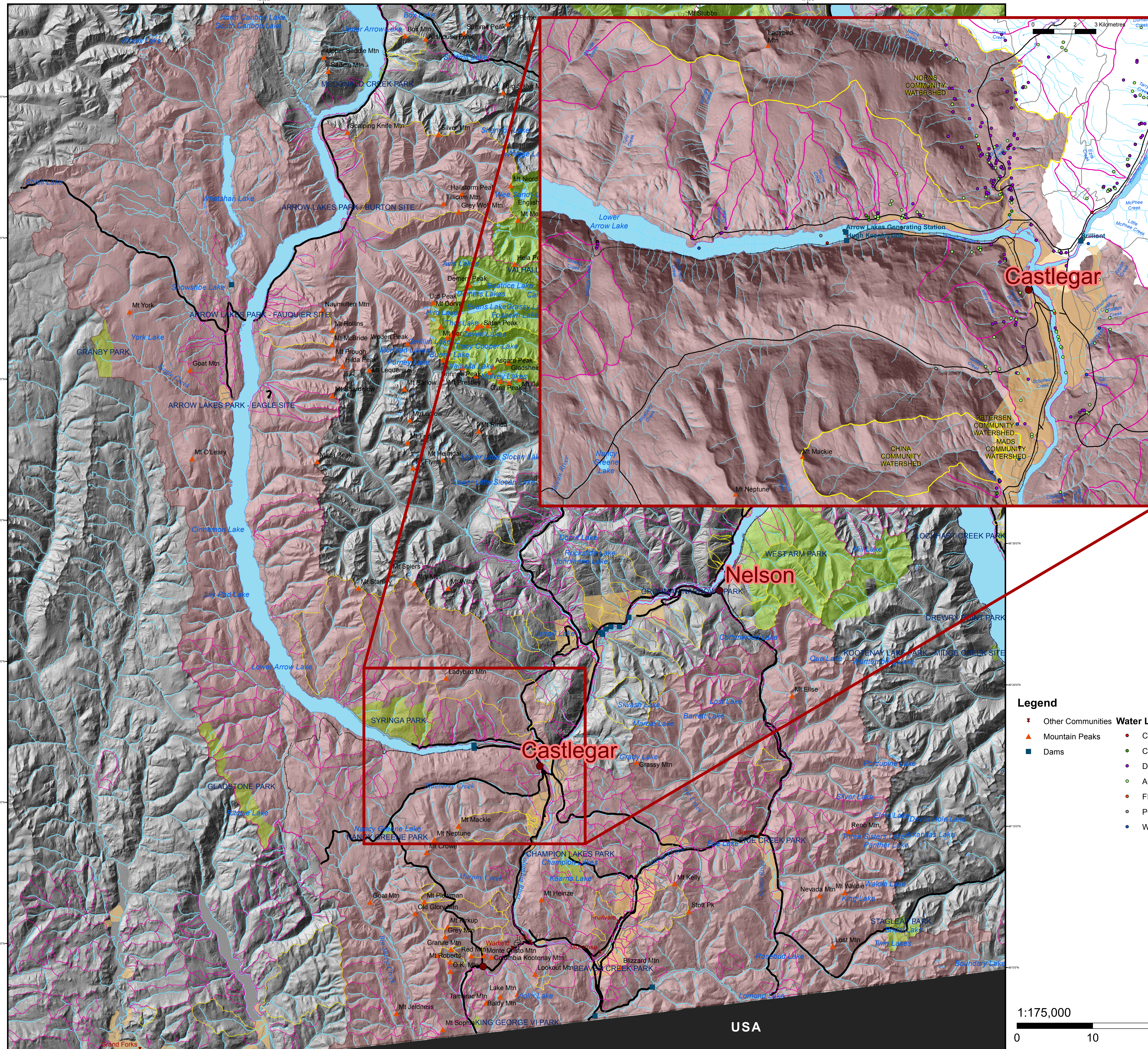


# Lower Arrow Lake

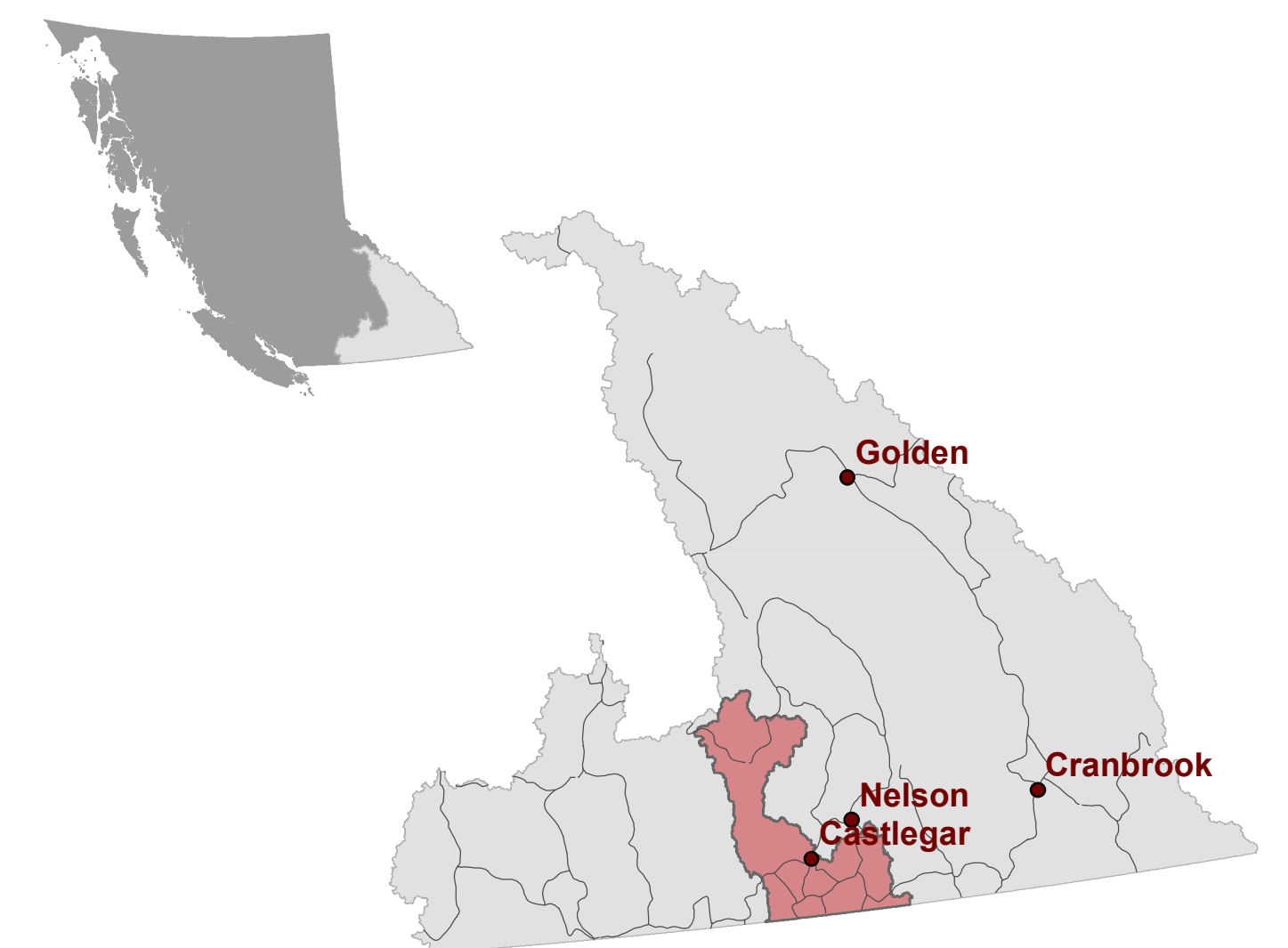


A **watershed** is an area of land in which all rain and snow runoff and small tributaries drain into a common body of water such as a creek, river or lake.

For example, the Columbia Basin, or **watershed**, is the large land base where all the water that falls as precipitation will eventually drain from, through a system of lakes, rivers, streams, reservoirs and glaciers, into the Columbia River. This water will eventually flow into the Pacific Ocean.

Lower Arrow Lake Watershed contains all the land, rivers and streams that drain into Lower Arrow Lake.

Lower Arrow Lake Watershed is within the Columbia Basin in southeastern BC



## Legend

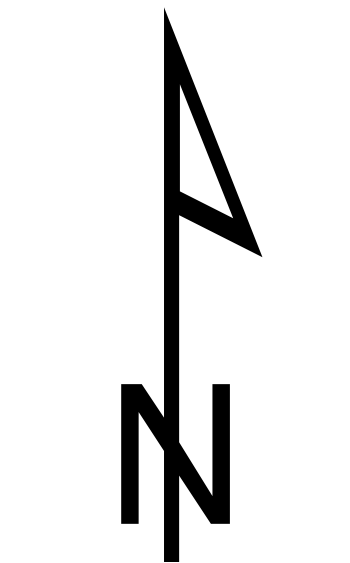
- |   |  |   |  |
|---|--|---|--|
| <ul style="list-style-type: none"> <li>✦ Other Communities</li> <li>▲ Mountain Peaks</li> <li>■ Dams</li> </ul> | <ul style="list-style-type: none"> <li>● COMMERCIAL</li> <li>● CONSERVATION</li> <li>● DOMESTIC</li> <li>● AGRICULTURE</li> <li>● FIRE</li> <li>● POWER</li> <li>● WATERWORKS</li> </ul> | <ul style="list-style-type: none"> <li>— Rail</li> <li>— Gravel Roads</li> <li>— Paved Roads</li> <li>— Rivers</li> </ul> | <ul style="list-style-type: none"> <li>Community Watershed</li> <li>Domestic Watershed</li> <li>Glaciers</li> <li>Lakes</li> <li>Ground Water Aquifer</li> <li>BC Parks and protected areas</li> <li>National Parks</li> <li>Lower Arrow Lake</li> </ul> |
|---|--|---|--|

1:175,000

NAD 1983 Albers

0 10 20 30 Kilometres

USA



wildsight  
www.wildsight.ca

Know Your Watershed is developed and delivered in co-operation with Wildsight education team

Map designed by Kristen Milburn  
Selkirk Geospatial Research Centre  
03 June 2011

