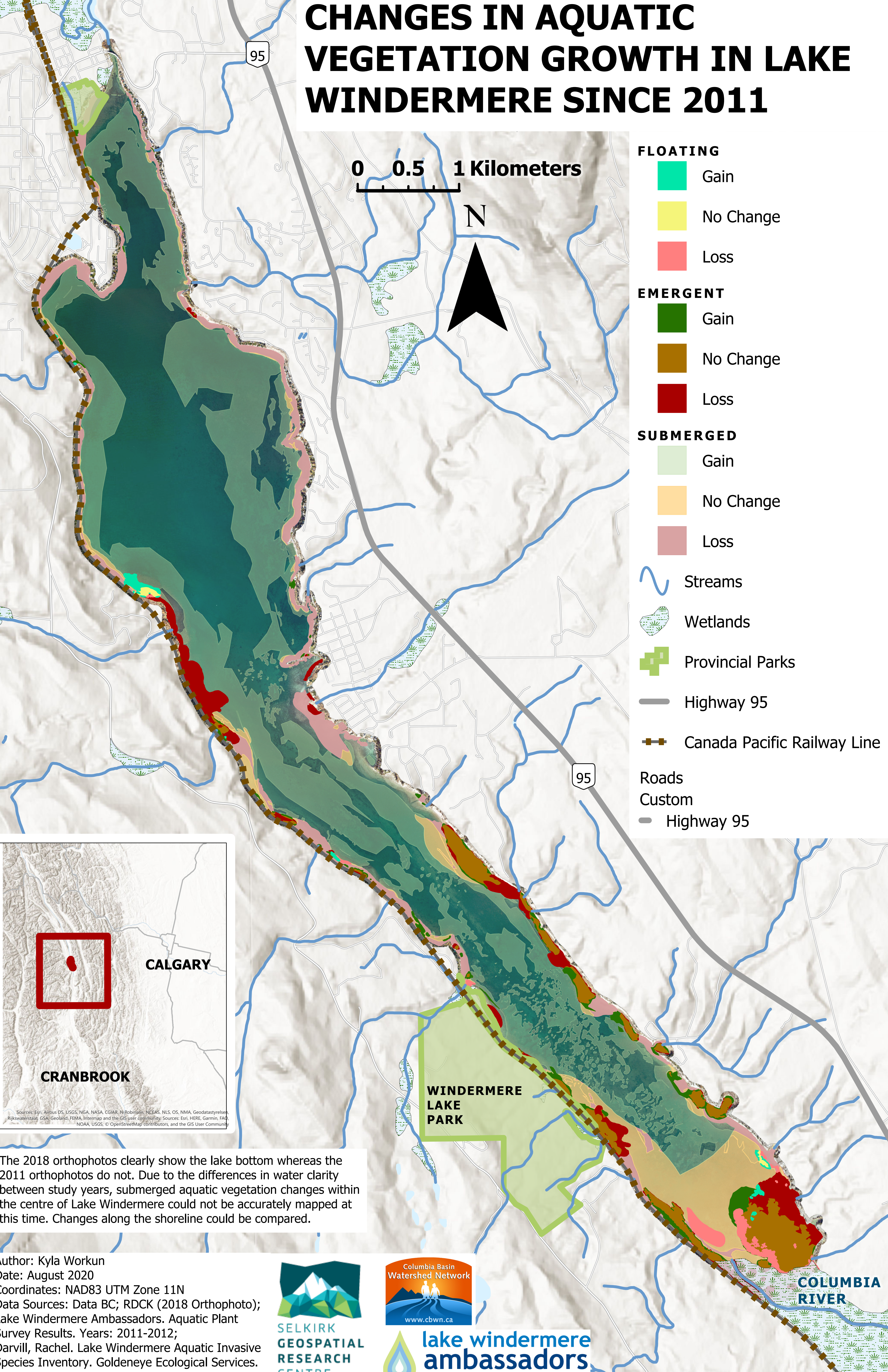


# CHANGES IN AQUATIC VEGETATION GROWTH IN LAKE WINDERMERE SINCE 2011



## FLOATING

- Gain
- No Change
- Loss

## EMERGENT

- Gain
- No Change
- Loss

## SUBMERGED

- Gain
- No Change
- Loss

- ~ Streams
- Wetlands
- Provincial Parks
- Highway 95
- - - Canada Pacific Railway Line
- Roads
- Custom
- Highway 95



The 2018 orthophotos clearly show the lake bottom whereas the 2011 orthophotos do not. Due to the differences in water clarity between study years, submerged aquatic vegetation changes within the centre of Lake Windermere could not be accurately mapped at this time. Changes along the shoreline could be compared.

Author: Kyla Workun  
 Date: August 2020  
 Coordinates: NAD83 UTM Zone 11N  
 Data Sources: Data BC; RDCK (2018 Orthophoto); Lake Windermere Ambassadors. Aquatic Plant Survey Results. Years: 2011-2012; Darvill, Rachel. Lake Windermere Aquatic Invasive Species Inventory. Goldeneye Ecological Services. Years: 2013, 2015, 2016, 2018, 2019



COLUMBIA RIVER

WINDERMERE LAKE PARK

CALGARY

CRANBROOK

Sources: Esri, Airbus DS, USGS, NGA, NASA, CGIAR, N Robinson, NCEAS, NLS, OS, NIMA, Geodastatysreflex, Rijkswaterstaat, GSA, Geoland, FEMA, Intermap and the GIS user community. Sources: Esri, HERE, Garmin, FAO, NOAA, USGS, © OpenStreetMap contributors, and the GIS User Community