

Laird Creek Water Users

SLOPE AND TERRAIN STABILITY: LIDAR DERIVED SLOPE WITH A RESOLUTION OF 1 METER AND LIKELY RISK OF A LANDSLIDE FOLLOWING FORESTRY HARVESTING AND/OR ROAD CONSTRUCTION

SLOPE DEGREE INCLINE

- ≤ 25
- 26 - 35
- 36 - 40
- 41 - 50
- 51 - 65
- 61 - 90

TERRAIN STABILITY HAZARD CLASS

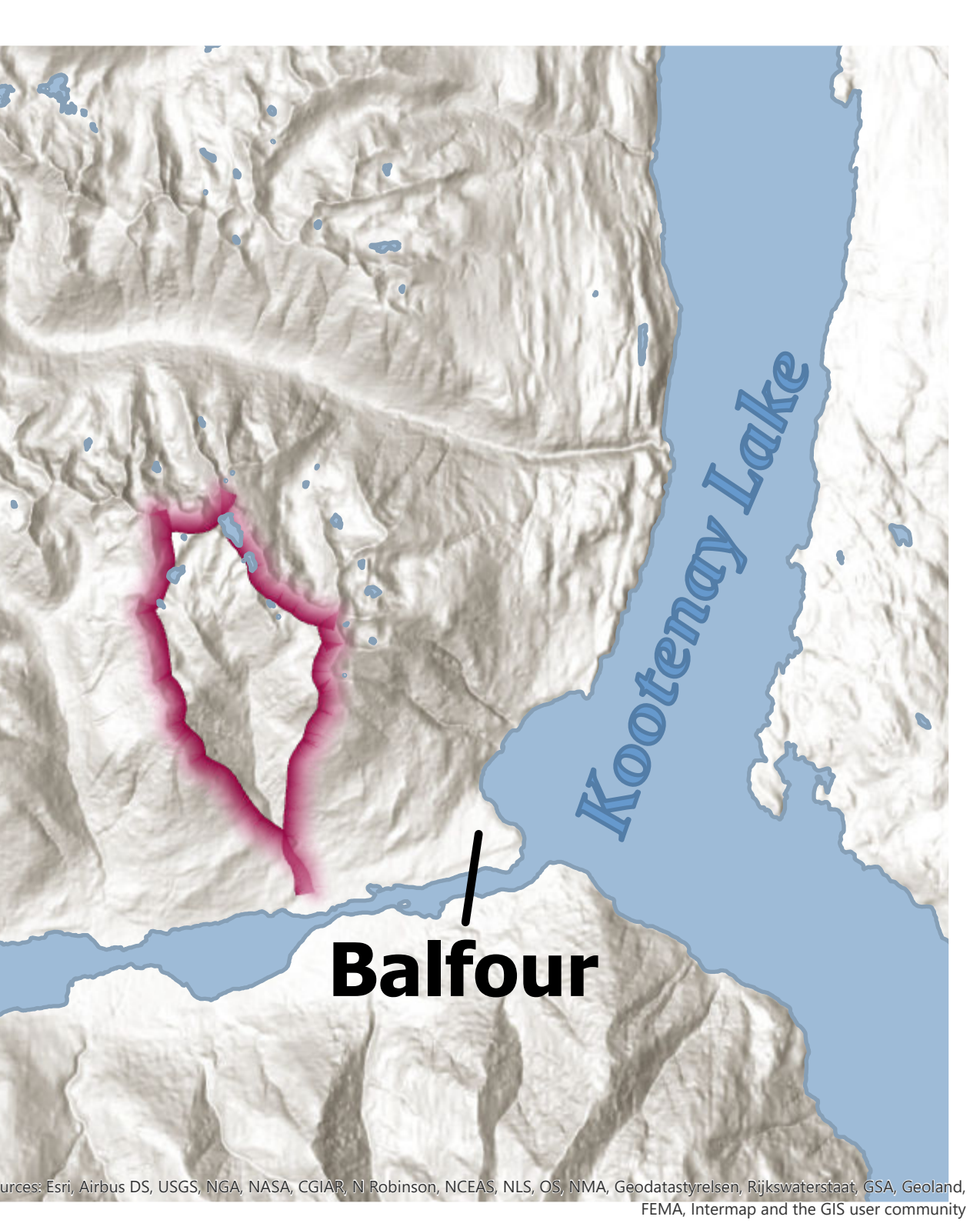
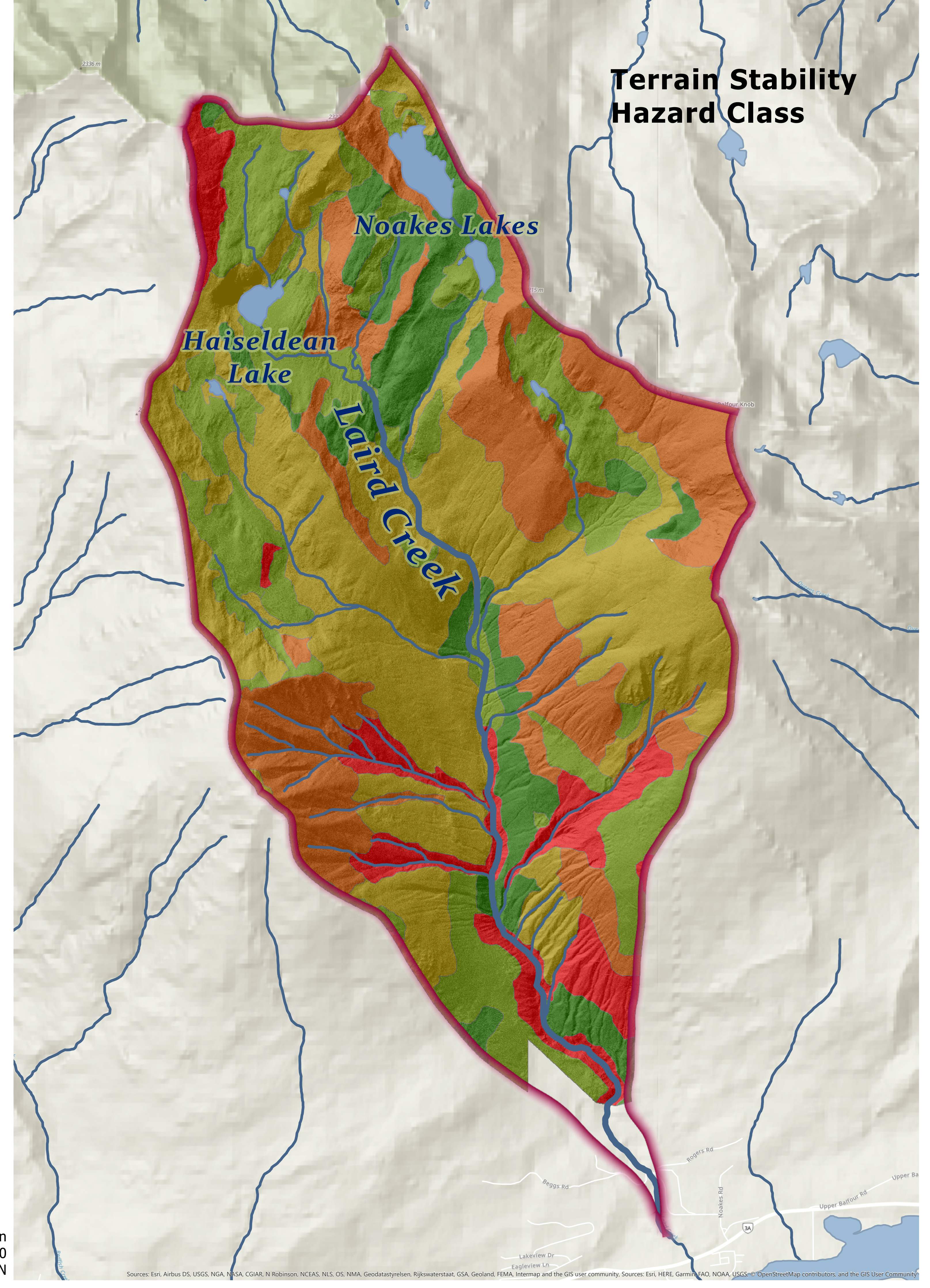
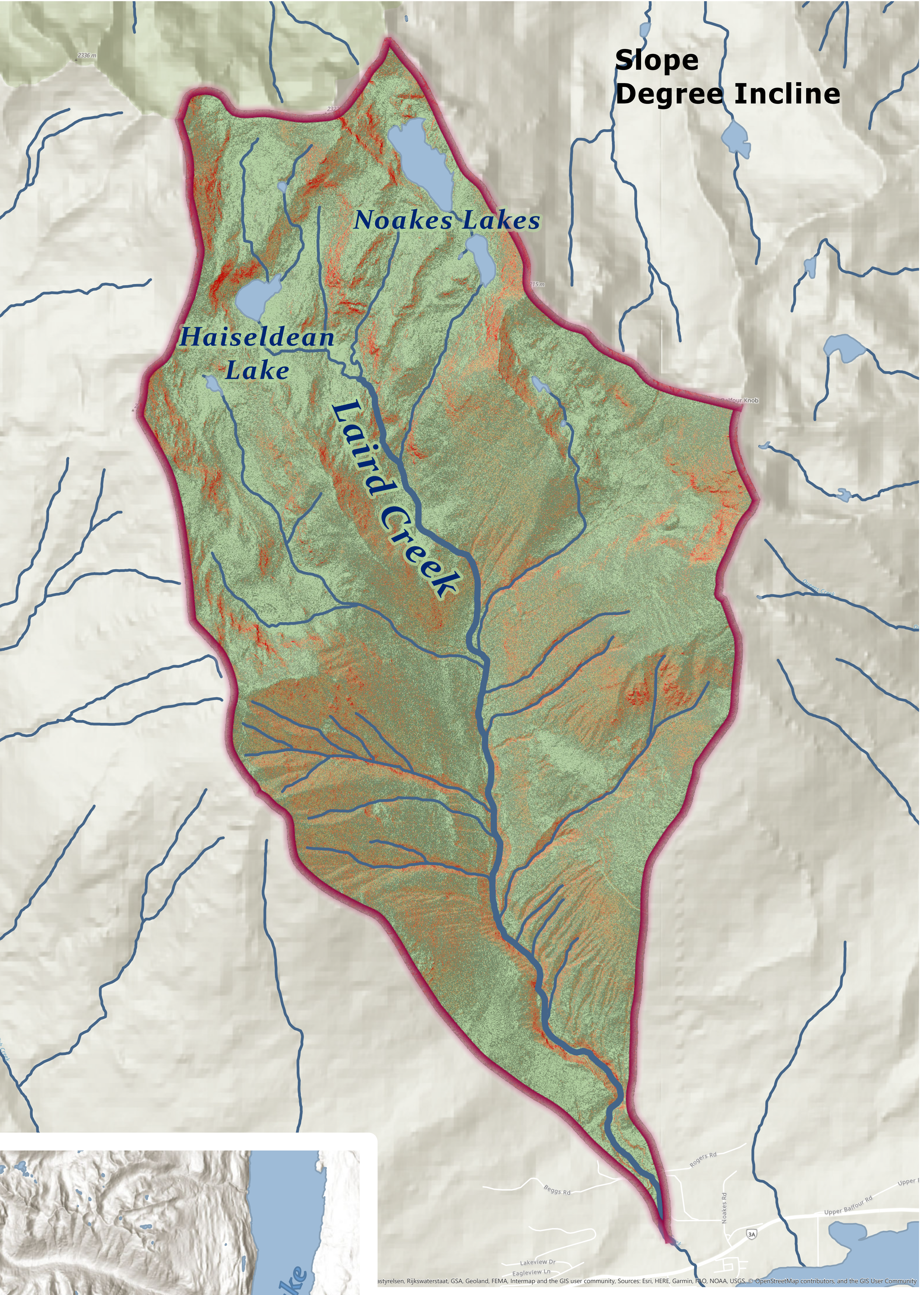
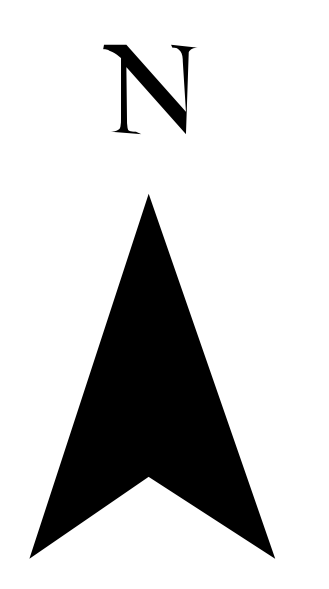
- No Significant Stability Problems
- Low to Very Low
- Moderate to Low
- Moderate
- Moderate to High

HYDROLOGY

- Lakes
- Laird Creek
- Streams
- Laird Creek Watershed Boundary

Hydrology
— fwstreams_Clip

0 1 2 Kilometers



Data Sources:
 - Data BC
 - Regional District of Central Kootenays : (LiDAR)
 - Utzing, G.F. April 1997. Terrain and Soil Inventory: West Arm Demonstration Forests (WADF). Kutenai Nature Investigations Ltd. : (Terrain Stability)

Author: Kyla Workun
 Date: July, 2020
 Coordinates: NAD83 UTM 11N