

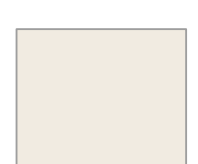









Laird Creek Water Users

SURFICIAL MATERIALS AND BEDROCK OF LAIRD CREEK WATERSHED

SURFICIAL MATERIALS



-  Colluvium
-  Weathered Bedrock (in situ)
-  Bedrock
-  Fluvial
-  Glaciofluvial
-  Morainal (Till)
-  Organic

HYDROLOGY

-  Lakes
-  Laird Creek
-  Streams

-  Laird Creek Watershed Boundary

BEDROCK PROPERTIES

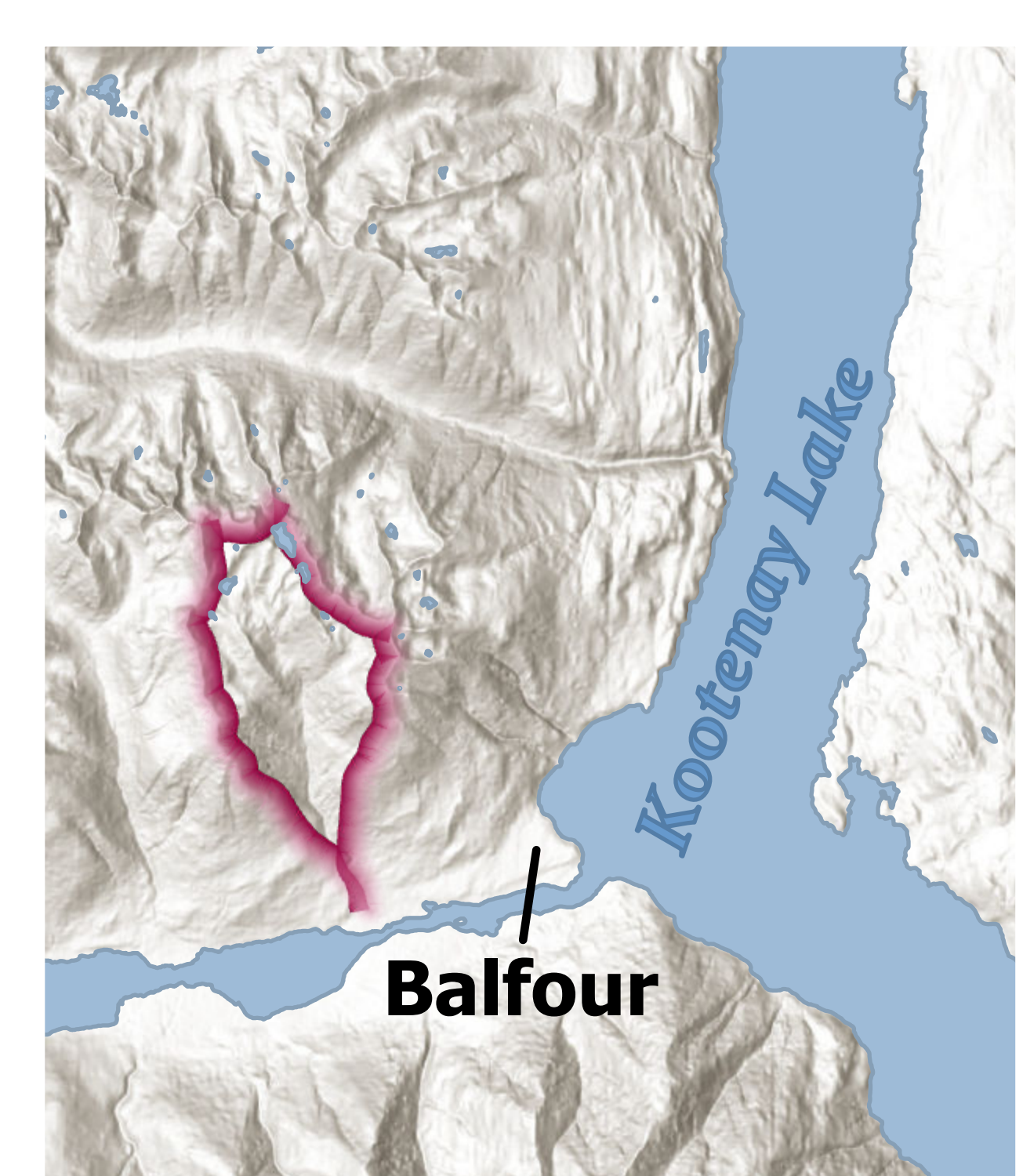
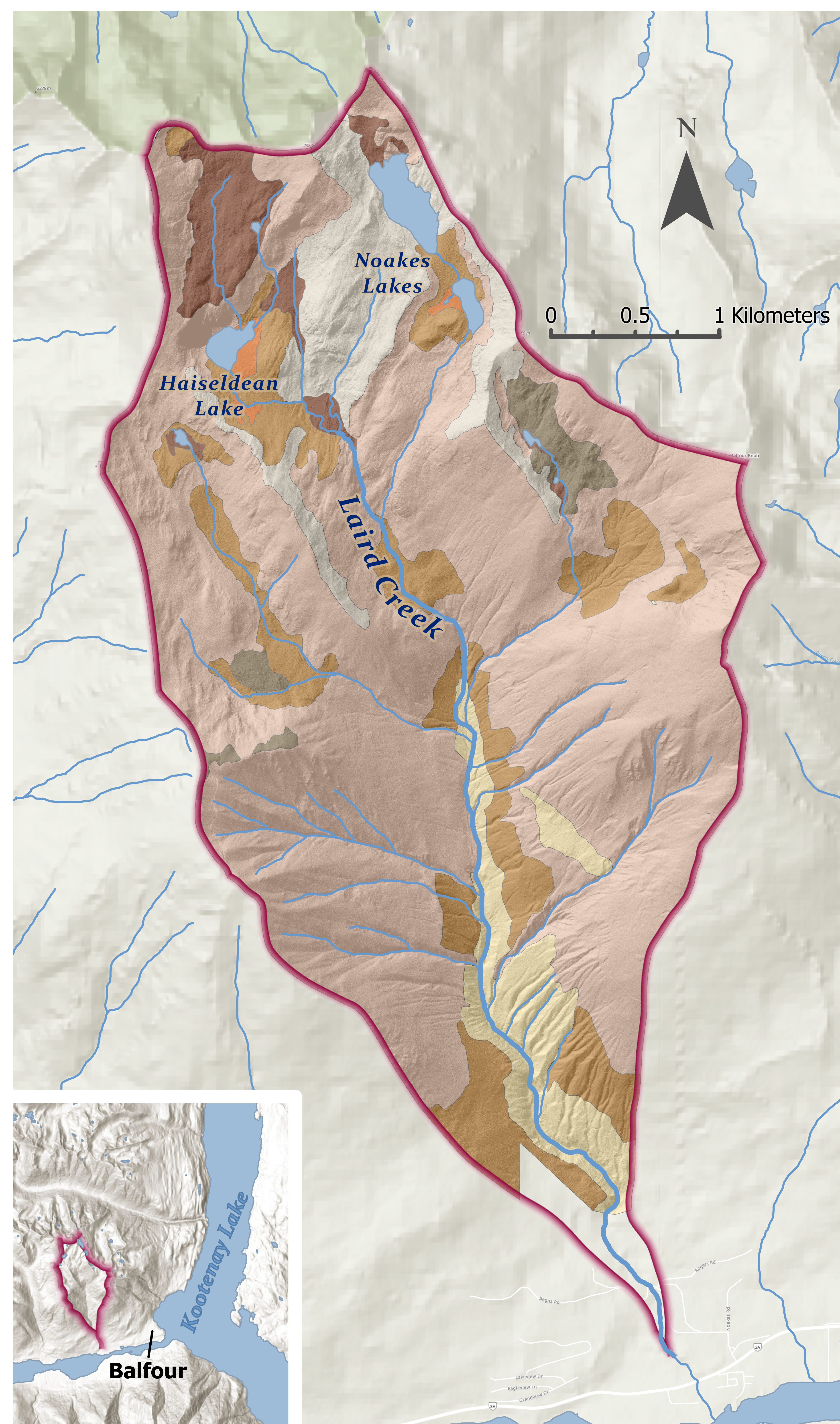
-  Intrusive Rocks, Granodioritic Intrusive Rocks: Porphyritic Granite, Granodiorite, Granite Gneiss
-  Sedimentary rocks: Limestone, Slate, Siltstone, Argillite, Quartzite



Data Sources:
 - Data BC
 - Regional District of Central Kootenays : (LiDAR)
 - Utzing, G.F. April 1997. Terrain and Soil Inventory: West Arm Demonstration Forests (WADF). Kutenai Nature Investigations Ltd.
 - B.C. Ministry of Environment Manual 10 (Version 2). 1997. Terrain Classification System for British Columbia. Victoria, B.C.



Author: Kyla Workun
 Date: July, 2020
 Coordinates: NAD83 UTM 11N



Sources: Esri, Airbyte DS, USGS, NGA, NASA, COPERNICUS, Robinson, NCEAS, NLS, OS, NIMA, Geodatasystemen, Pijkwalestat, GSA, Geoland, FEMA, Intermap and the GIS user community. Sources: Esri, HERE, Garmin, FAO, INRIA, USGS, OpenStreetMap contributors, and the GIS User community.