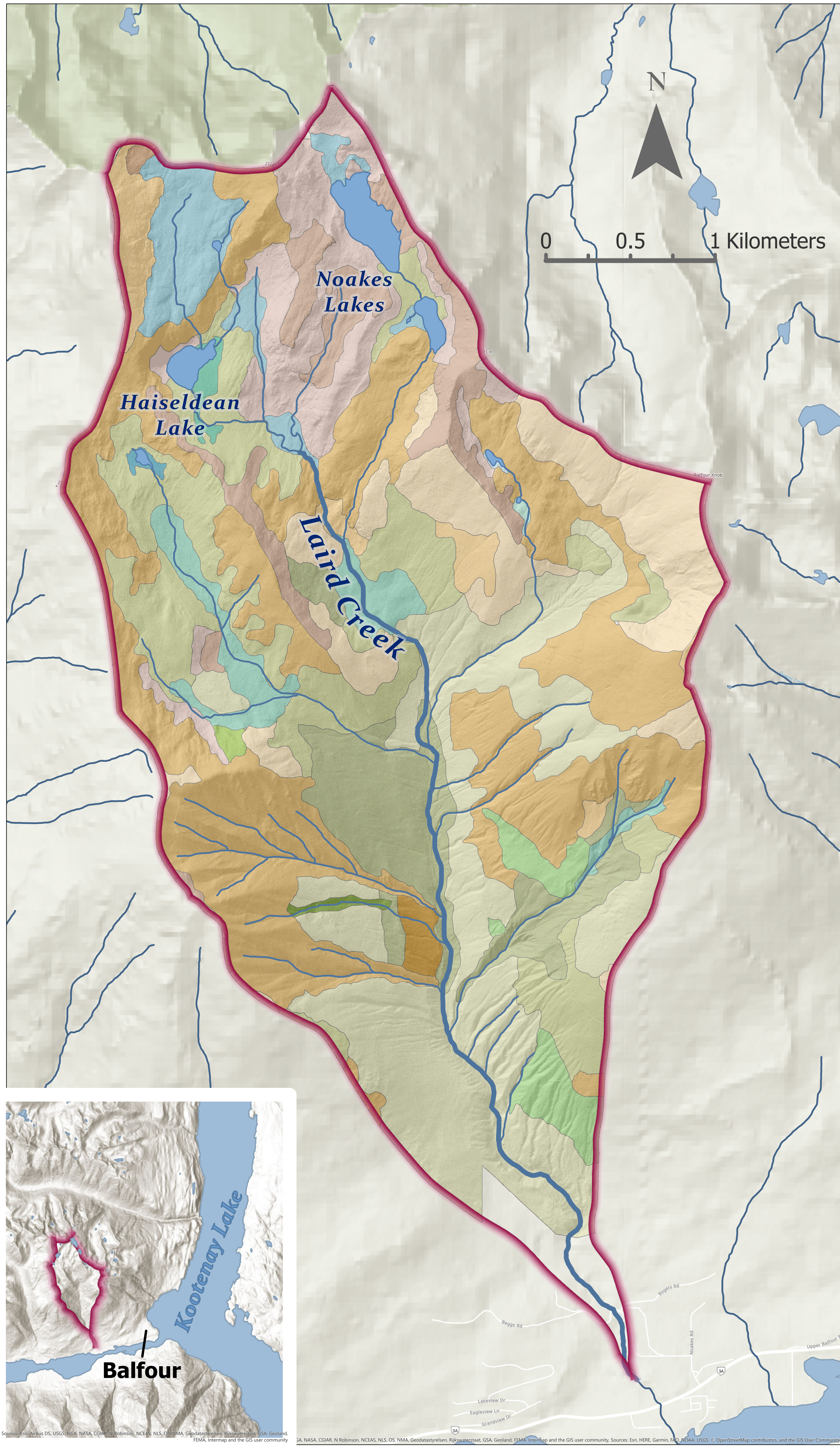


Laird Creek Water Users

SOIL MOISTURE REGIME (SMR) OF LAIRD CREEK WATERSHED



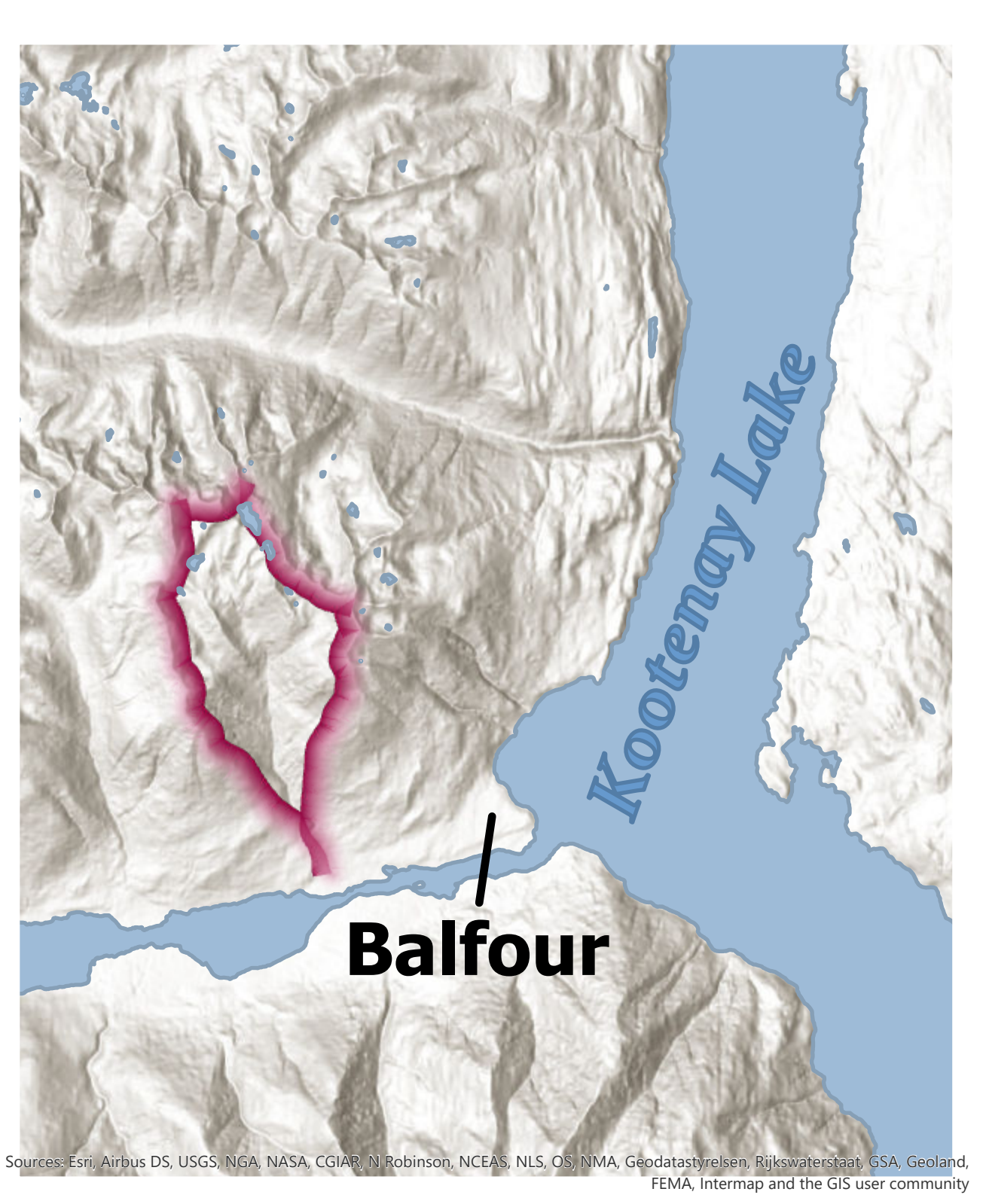
SOIL MOISTURE REGIME

- Very Xeric
- Very Xeric to Xeric
- Very Xeric to Sub-Hygric
- Xeric
- Xeric to Very Xeric
- Xeric to Sub-Xeric
- Xeric to Sub-Mesic
- Sub-Xeric
- Sub-Xeric to Xeric
- Sub-Xeric to Sub-Mesic
- Sub-Mesic
- Sub-Mesic to Sub-Xeric
- Sub-Mesic to Mesic
- Mesic
- Mesic to Sub-Mesic
- Mesic to Sub-Hygric
- Sub-Hygric
- Sub-Hygric to Mesic
- Sub-Hygric to Hygric

Laird Creek Watershed Boundary

HYDROLOGY

- Lakes
- Laird Creek
- Streams



Data Sources:
 - Data BC
 - Regional District of Central Kootenays : (LiDAR)
 - Utzing, G.F. April 1997. Terrain and Soil Inventory: West Arm Demonstration Forests (WADF). Kutenai Nature Investigations Ltd.

Author: Kyla Workun
 Date: July, 2020
 Coordinates: NAD83 UTM 11N