



Laird Creek Water Users

GEOMORPHOLOGICAL PROCESSES DUE TO NATURAL WEATHERING, EROSION, AND DEPOSITION OF LAIRD CREEK WATERSHED

GEOMORPHOLOGICAL PROCESSES

-  Erosion (Washing)
-  Erosion (Washing), Gully Erosion
-  Erosion (Washing), Rapid Mass Movement, Gully Erosion
-  Gully Erosion
-  Gully Erosion, Rapid Mass Movement, Debris Slide
-  Gully Erosion, Snow Avalanche
-  Rapid Mass Movement
-  Rapid Mass Movement, Rock Fall
-  Rapid Mass Movement, Debris Slide, Gully Erosion
-  Snow Avalanche
-  Snow Avalanche, Rapid Mass Movement
-  Snow Avalanche, Rapid Mass Movement, Rock Fall
-  Nivation, Snow Avalanche
-  Slow Mass Movement
-  No Data

HYDROLOGY

-  Lakes
-  Laird Creek
-  Streams

 Laird Creek Watershed Boundary



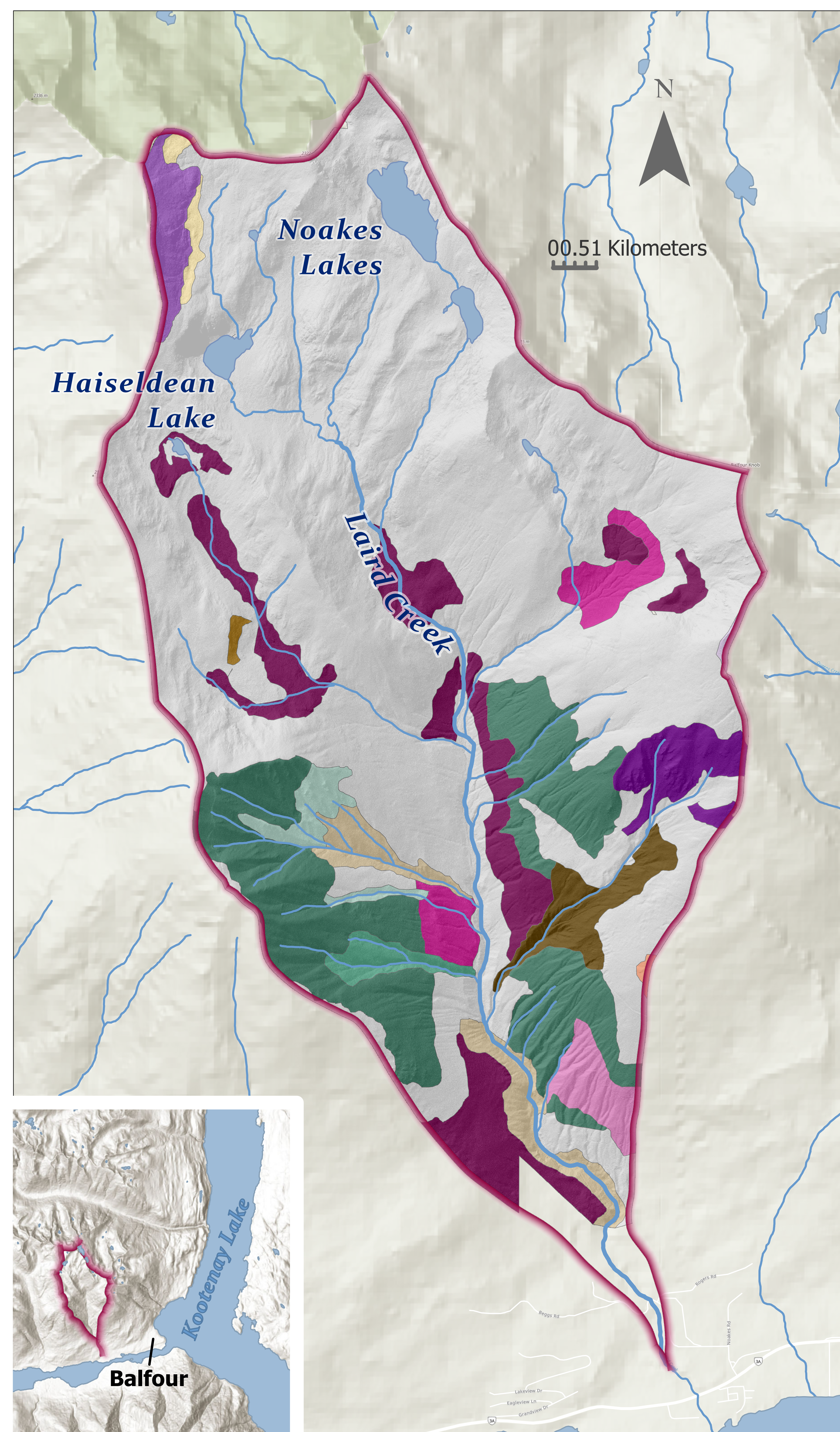
Data Sources:
- Data BC

- Regional District of Central Kootenays : (LiDAR)
- Utzing, G.F. April 1997. Terrain and Soil Inventory: West Arm Demonstration Forests (WADF). Kutenai Nature Investigations Ltd.
- B.C. Ministry of Environment Manual 10 (Version 2). 1997. Terrain Classification System for British Columbia. Victoria, B.C.

Author: Kyla Workun

Date: July, 2020

Coordinates: NAD83 UTM 11N



Sources: Esri, Airbyte DS, USGS, NGA, NASA, COPERNICUS, Robinson, NCEAS, NLS, OS, NIMA, Geodatasystemen, Polkadotstar, CSA, Geoland, ZMA, Intermap and the GIS user community. Sources: Esri, HERE, Garmin, FAO, IGN, USGS, OpenStreetMap contributors, and the GIS User Community