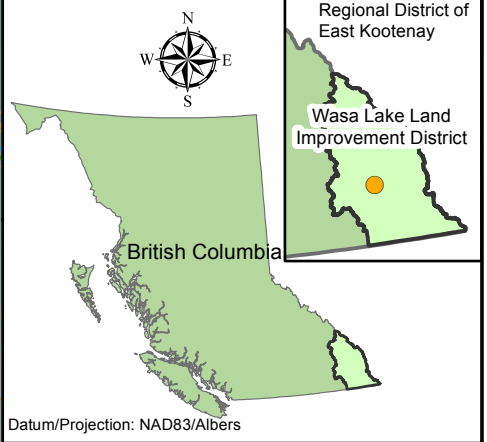
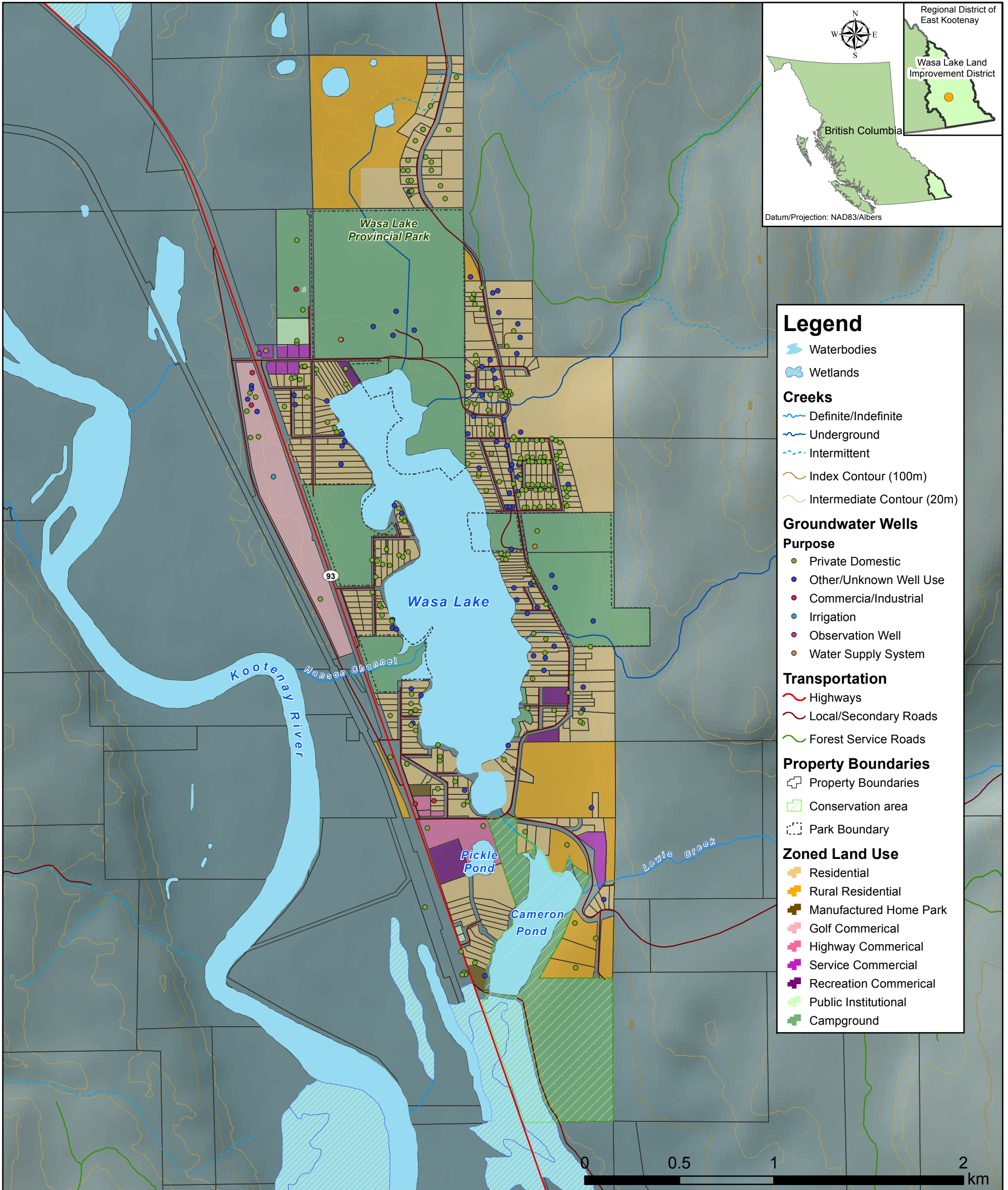




Wasa Lake Land Improvement District



Legend

- Waterbodies
- Wetlands
- Creeks**
 - Definite/Indefinite
 - Underground
 - Intermittent
- Index Contour (100m)
- Intermediate Contour (20m)
- Groundwater Wells Purpose**
 - Private Domestic
 - Other/Unknown Well Use
 - Commercial/Industrial
 - Irrigation
 - Observation Well
 - Water Supply System
- Transportation**
 - Highways
 - Local/Secondary Roads
 - Forest Service Roads
- Property Boundaries**
 - Property Boundaries
 - Conservation area
 - Park Boundary
- Zoned Land Use**
 - Residential
 - Rural Residential
 - Manufactured Home Park
 - Golf Commercial
 - Highway Commercial
 - Service Commercial
 - Recreation Commercial
 - Public Institutional
 - Campground

Prepared for the Wasa Lake Land Improvement District

Produced by Kalyn May
Selkirk Geospatial Research Centre
Datum/Projection: NAD83/UTMZone11N
August 2017

Data Sources
BC Freshwater Atlas: Wetlands, Creeks
Digital Road Atlas: Transportation
Regional District of East Kootenay: Zoned Land Use, Property Boundaries
DataBC: Forest Service Roads, Groundwater wells, Conservation Areas