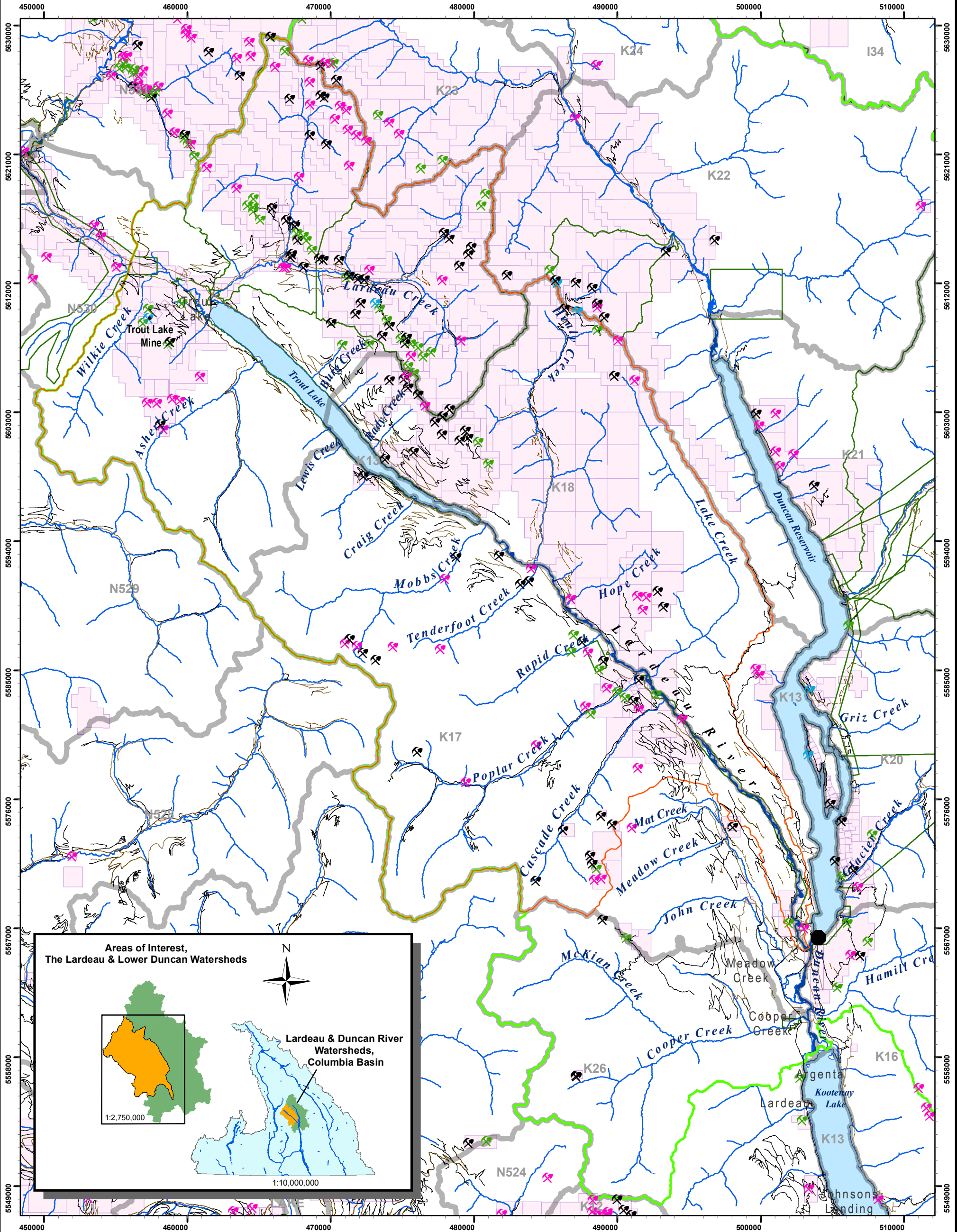


The Lardeau River: Mining Activity



- Duncan Dam
- Trout Lake Mine Location
- Mineral Occurrences - Status**
- ✕ Developed Prospect
- ✕ Past Producer
- ✕ Producer
- ✕ Prospect
- ✕ Showing
- Roads - Gravel
- Roads - Paved
- Forest Service Roads
- Rivers & Tributaries**
- 3rd Order Streams & Higher
- Duncan River Watershed
- Lardeau River Watershed
- Lakes
- Landscape Units
- Mineral & Placer Tenures - Claims
- Mineral & Placer Reserves

*Note: Trout Lake Mine is also known as "Max Moly"
for more information on this mine please see:
MineFile Number: 082KNW087

Produced by: SGRC, Melissa MacLeod. November 17, 2010

0 2.5 5 10
Kilometres
UTM Zone 11N NAD 83
1:250,000

Data Sources:
Mineral Occurrence Data: MineFile BC, BC Geological Survey (MEMPR), <http://www.empr.gov.bc.ca/Mining/Geoscience/MapPlace/geoData/Pages/default.aspx>
Mineral and Placer Tenure Data: BCGOV EMPR Titles Branch, GeoBC.
Mineral and Placer Reserve Data: BCGOV EMPR Titles Branch, GeoBC.
Water Features: Corporate Watershed Base Data (CWB), Scale: 1:20,000, GeoBC.
Duncan Dam: CWB Obstructions, Scale: 1:20,000, GeoBC.
Landscape Units: BCGOV AL CLAD Strategic Land Policy and Legislation Branch.
Transportation Networks: TRIM data, 1:20,000.
Forest Service Roads: Forest Tenure As-Built roads, BCGOV FOR Resource Tenures and Engineering (RTEB), GeoBC.