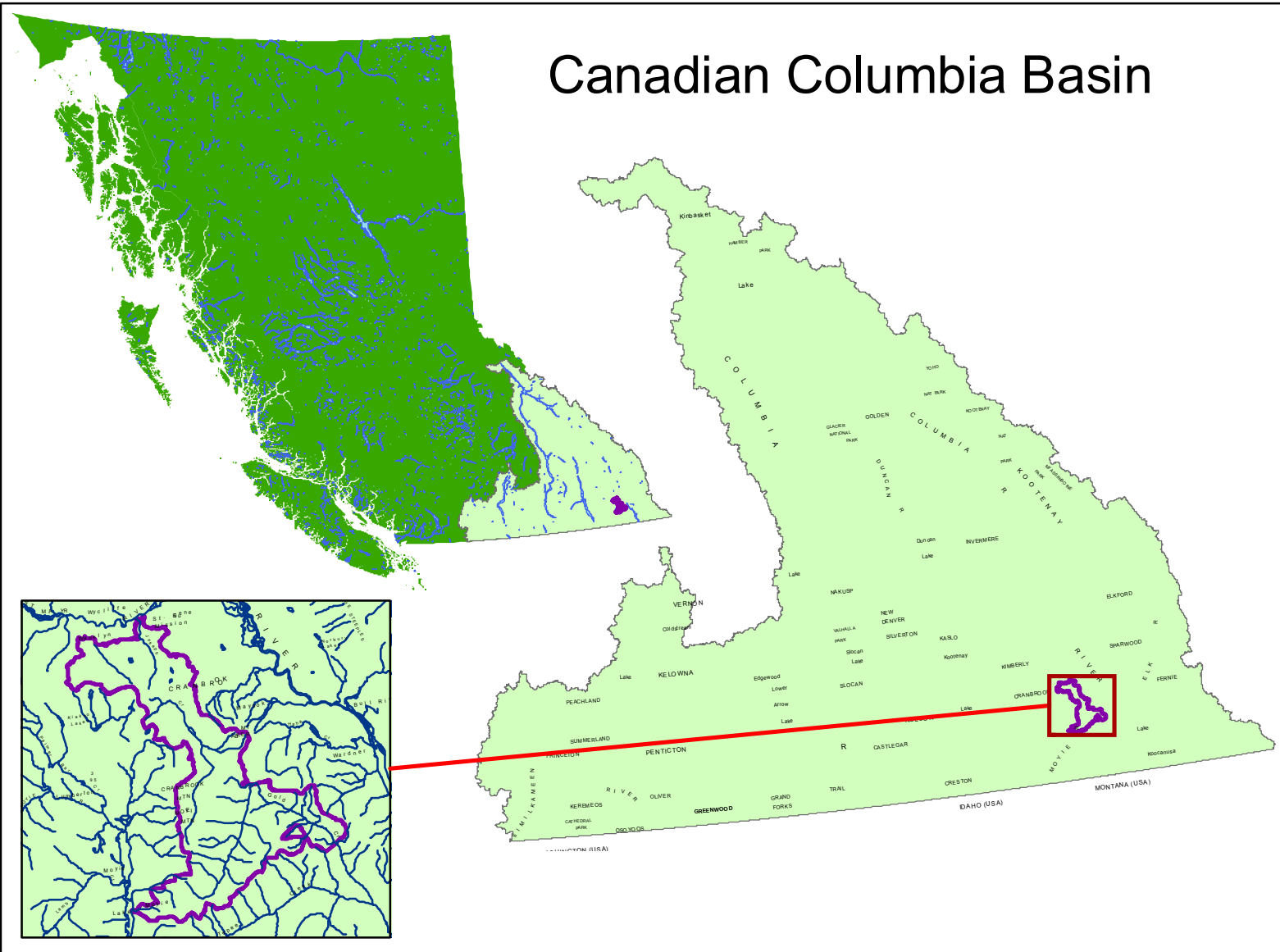
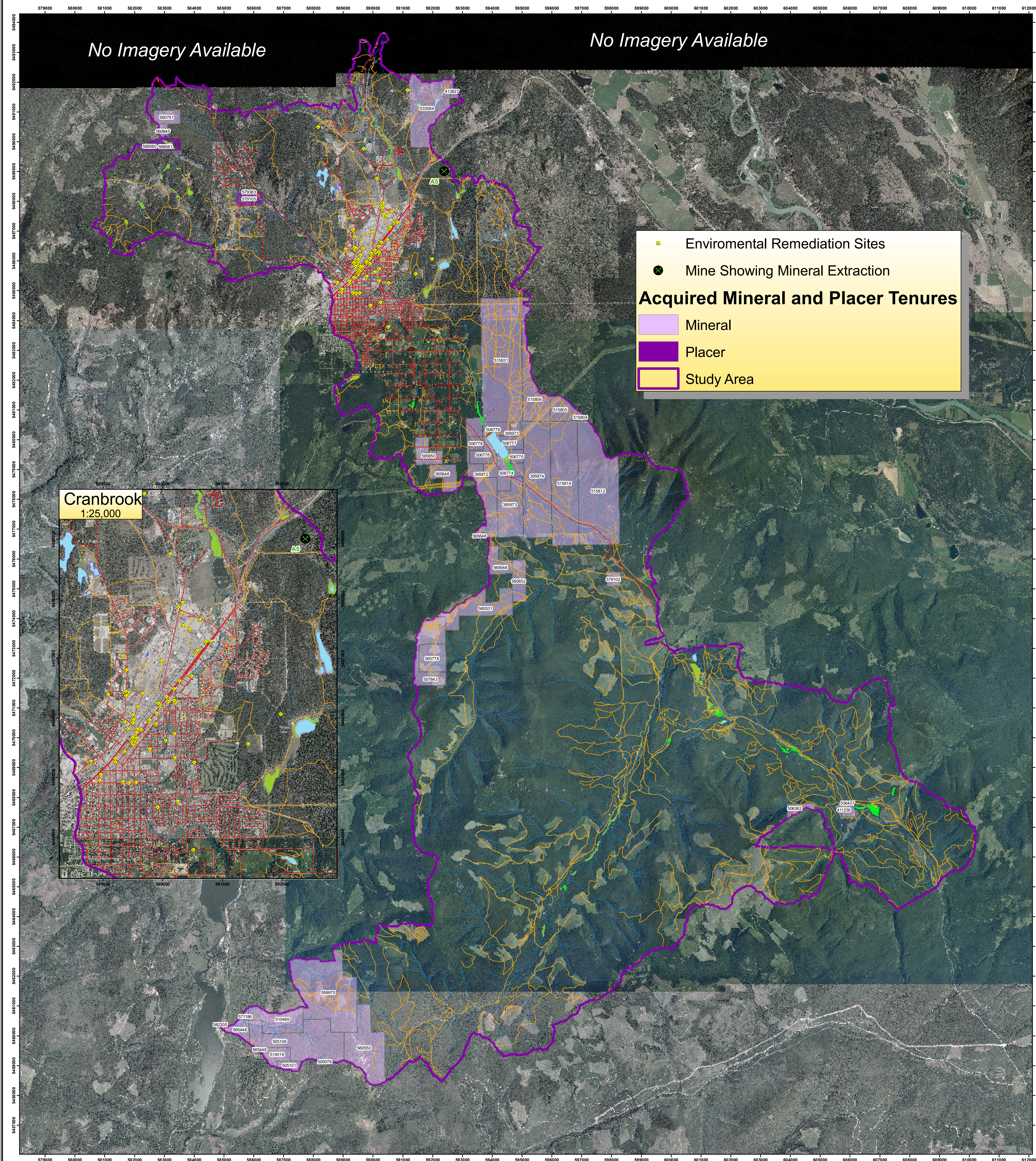


# Mining Activity and Site Contamination in Joesph Creek and Gold Creek Watersheds



This study area comprises of Joseph Creek, Gold Creek and other adjacent watersheds and the purpose of this map is to effectively illustrate mineral activity at the landscape level within and surrounding these watersheds.

Only 15% of the study area has mining tenures by mining companies or individuals. The 'Cranbrook' mine which is a clay mine is the only active mine in the study area. There are 78 non-mining-related contaminated sites in the area, in particular, within the Cranbrook municipality. More information related to environmental condition of land can be found at BC Online's Site Registry at [https://www.bconline.gov.bc.ca/site\\_reg.html](https://www.bconline.gov.bc.ca/site_reg.html). More information related to specific claims/tenures illustrated can be obtained by searching Mineral Titles Online BC at <http://www.mtonline.gov.bc.ca>

Mining operations and site contamination can degrade water quality if proper actions are not taken. Considering this area large number of contaminated sites, there is high potential for concern and close monitoring of water quality is advised. Future analyses with more complete data could provide useful information such as distances between contaminated sites and water bodies as well as what geological surfaces exist beneath the sites and the water table. Other information such as claim ownership and claims that are in the process of becoming operational mines would be useful for water management.

Watersheds Study Area (ha)	34,337.4
Number of Tenures	43
Tenure Size Range - Hectares (ha)	1.3 - 566.7
Average Tenure Size (ha)	120.8
Area of Tenures - Hectares (ha)	5,195.5
% of Watershed Tenured	15%
Number of Contaminated Sites	72

Mines Showing Minerals Extracted		
Mine Name	Location	Mineral
Cranbrook	A1	Clay

- Road (Gravel, Unimproved, Overgrown)
- Road (Paved, Undivided or Divided)
- Bridge
- Rail Line
- Trail
- Canal
- River or Stream - Definite
- River or Stream - Indefinite
- Lake - Intermittent
- Dam
- Marsh
- Swamp
- Lake - Definite
- Reservoir - Definite
- River or Stream - Definite

**Data Sources**

Mining Data: BC Ministry of Energy, Mines and Petroleum Resources  
Land and Resource Data Warehouse

TRIM Data: BC Ministry of Agriculture and Lands  
Integrated Land Management Bureau

Orthophotos: BC Ministry of Agriculture and Lands  
Integrated Land Management Bureau

Datum: NAD 83  
Projection: UTM Zone 11 N  
Date: April 28, 2008  
Produced by: Selkirk Geospatial Research Centre (Chris Gray)

